

**GO TO
INDEX**

PLEASE NOTE:

**YOU MUST
ADD 11%
SURCHARGE
TO PRICES
AS OF
8/4/21**



CE ATTACHMENT »»»»» 2022 ««««« PRICING

PRICES EFFECTIVE DECEMBER 1, 2021

Revised 2/7/22



See Pg. 2 for Discounts

(888) 987-7433
Wholegoods: Ext. 1989
Parts: Ext. 1992
Service: Ext. 1994



LPK_2022
© Copyright 2022

**Sourcewell Contract 070821-LPI,
Roadway Maintenance Equipment**



Kubota CE Attachments 25% off List Price

	Production Location	Estimated Dealer Uncrating/ Set-up Time
Angle Brooms	Abilene	45 Minutes
Box Blades	Abilene	15 Minutes
Breakers	Abilene	30 Minutes
Cold Planner	Abilene	20 Minutes
Dozer Blades	Abilene	45 Minutes
Grapples	Lucas	30 Minutes
Hopper Broom	Abilene	20 Minutes
Light Material Bucket	Abilene	15 Minutes
Loader Boom	Lucas	15 Minutes
Pallet Forks	Abilene	15 Minutes
Post Hole Diggers	Abilene	1 Hour
Powered Rakes	Abilene	30 Minutes
Primary Seeders	Abilene	1 Hour
Ripper	Kipp	15 Minutes
Road Saw	Abilene	20 Minutes
Silage Defacer	Abilene	15 Minutes
Skid Cutters	Lucas	1 Hour
Skid Grader	Kipp	15 Minutes
Skid Steer Hitch	Kipp	15 Minutes
Skid Tiller	Abilene	30 Minutes
Snow Blowers	Abilene	1 Hour
Snow Pushers	Lucas	15 Minutes
Stump Grinder	Kipp	1 Hour
Tilt Hitch	Lucas	15 Minutes
Tree/Post Puller	Abilene	15 Minutes
Trenchers	Abilene	30 Minutes
Trip Edge Blades	Lucas	15 Minutes

SKID ATTACHMENTS

Buckets

- AP-SL Series 31
- AP-HD Series 32
- AP-SRB15 Series Rock 33
- AP-CB25 Series Combination 34
- AP-CB35 Series Combination - **NEW!** 35
- AP-GB30 Series Scrap 36
- AP-LM25 Series Light Material 37
- AP-UB25 Series Utility 38

Box Blade

- AP-BB30 Box Blade 10

Breakers

- AP-BR Series Hydraulic Breakers 41
- Breaker Mount Selection Guide 42

Brooms

- AP-AB72 Series 53
- AP-AB84 Series 53
- AP-HB Series Hopper Brooms 54

Cold Planers

- AP-CP30 Cold Planers 44

Concrete Claw

- AP-CC30 Series Concrete Claw 43

Dozer Blades

- AP-DZ30 Series 11

Excavator Augers

- AP-EA20 Series 16
- AP-EA35 Series 17
- Auger Options 18
- Accessories 19

Grapples

- AP-SGC20 Series Claw 28
- AP-SGR15 Series Rock 29
- AP-RG30 Series Root 30

K-Hitch

- AP-KH15 Series - **NEW!** 48

Loader Boom

- AP-LB60 Series 40

Pallet Forks

- AP-PFL46 Series 39
- AP-PFL56 Series 39

Powered Rakes

- AP-SR27 Series 12
- AP-SRF27 Series 13

Primary Seeders

- AP-PS20 Skid Primary Seeders 9

Ripper

- AP-RP30 Ripper 20

Road Saws

- AP-SW30 Road Saws 45

Silage Defacer

- AP-SD96 Silage Defacer 55

Skid Augers

- AP-SA20 Series 14
- AP-SA35 Series 15

- AP-SC25 Series 4
- AP-SC40 Series 5
- AP-SC60 Series 6
- AP-SC70 Series 7

Skid Grader

- AP-SG25 Series 21

Skid Steer Hitch

- AP-SH35 Series 46

Skid Tiller

- AP-SRT Series 8

Snow Blowers

- AP-SBL25 Series 49

Snow Pushers

- AP-SSP15 Series 50
- AP-SSP25 Series 51

Stump Grinder

- AP-SSG25 Series 23

Stump Grinder

- AP-SSG20 Series - **NEW!** 24

Tilt-Hitch

- AP-TH35 Series 47

Tree/Post Puller

- AP-STP15 Series 56
- AP-STP25 Series 56

Trencher

- AP-TR Series 25

Trip Edge Blades

- AP-TE35 Series 52

Vibratory Rollers

- AP-VRS/VRC Vibratory Rollers - **NEW!** 22

COMPACT ATTACHMENTS

Breakers

- AP-BR Series Hydraulic Breakers - **NEW!** 61

Buckets

- AP-CL148 & 248 Series - **NEW!** 58

Pallet Forks

- AP-CPF12 Series - **NEW!** 57

Powered Rakes

- AP-CSR10 Series - **NEW!** 60

Skid Augers

- AP-CSA10 Series - **NEW!** 59

Trenchers

- AP-CTR10 Series - **NEW!** 62

Freight Charts

- US & Canada 64

AP-SC25 Series Skid Cutters

RETURN TO INDEX

Various Flow Requirements

AVAILABLE FOR: SSV65 / SSV75 / SVL75-2 / SVL97-2

Skid Cutters



SKID STEER MUST BE EQUIPPED WITH A CASE DRAIN SYSTEM.

- Hitch: Skid Steer
- Adjustable to Center or 8¹/₂" Right Offset
- Deck: 10 Gauge Steel
- Side Skirt Construction: 1/4" Steel
- Front Deck Protection: Single Row Chain Guard, Standard Eq.
- Rear Deck Protection: Double Row Chain Guard, Standard Eq.
- Deck Lift Height Protection: Safety Chain Limiter
- Deck Wear Protection: Optional Four Corner Mounted Skid Shoes
- Operator Protection: Optional Protective Door Shield
- Cutting Height Gauging: Optional Pivoting & Adjustable
- Front Mounted Gauge Wheel w/Laminated Tire
- Maximum Operating Pressure: 3500 psi
- Medium Volume Drive Motors: For hyd. systems with 18-23 GPM flow at 1500-3500 PSI;
- High Volume Drive Motors: For hyd. systems with 24-30 GPM flow at 1500-3500 PSI;
- 60" option:
- Med. Volume Motor Blade Tip Speed: 19,181 FPM at 23 GPM
- High Volume Motor Blade Tip Speed: 19,390 FPM at 30 GPM
- 72" option:
- Med. Volume Motor Blade Tip Speed: 19,487 FPM at 23 GPM
- High Volume Motor Blade Tip Speed: 19,699 FPM at 30 GPM
- Hydraulic Hose Length: 80" Standard

*Polycarbonate door required with this attachment.

- Cutting Height: 1.5" to 18" infinitely variable
- Cutting Width: 60" or 72"
- Overall Width: 60: 65¹/₂" 72: 78"
- Overall Length: 60: 73" 72: 91"
- Cutting Capacity: 2" Diameter
- Blade Rotation: Clockwise
- Blades & Blade Carrier: 1/2"x 4" Updraft, Heavy Duty Round Pan Stump Jumper

YOU MUST ADD 11% SURCHARGE TO PRICES AS OF 8/4/21

MODEL NUMBER	DESCRIPTION	APPROX. MACHINE WEIGHT	SHIPPING WEIGHT	LIST PRICE
AP-SC2560	SKID CUTTER - 60" Width Single Front Chain Guard Double Rear Chain Guard	893#	999#	\$ 4,293
AP-SC2572	SKID CUTTER - 72" Width Single Front Chain Guard Double Rear Chain Guard	1084#	1190#	\$ 4,819
-01	<u>You May Choose a Gauge Wheel</u> Single Gauge Wheel - Front Mounted (326-858A)	114#	154#	\$ 509
	<u>You Must Choose a Hydraulic Motor Assembly</u>			
-15	Hydraulic Motor: 18-23 GPM @ 3500 PSI			\$ 898
-16	Hydraulic Motor: 24-30 GPM @ 3500 PSI			\$ 898
	<u>You May Choose a Pressure Gauge</u>			
-20	Motor Pressure Gauge (326-833A)	2#	2#	\$ 55
	<u>You May Choose a Skid Shoe Option</u>			
-41	Skid Shoes - Four Corners - 1/4" x 2" (326-827A)	15#	15#	\$ 87
-42	Heavy-Duty Skid Shoes - Four Corners - 3/8" x 3" (326-828A)	25#	25#	\$ 110
	<u>You Must Choose a Polycarbonate Protective Door Option</u>			
-86	Protective Door (for skid steers not equipped with a cab door)	14#	14#	\$ 428
-87	No Protective Door			

AP-SC40 Series Skid Cutters

RETURN TO INDEX

Various Flow Requirements

AVAILABLE FOR: SSV65 / SVL65-2 / SSV75 / SVL75-2 / SVL97-2



Width: 60-71"; 72-83"
 Length: 60-78¹/₂"; 72-91¹/₂"
 4" Cutting Capacity Deck: 1/4"
 15-43 GPM Range - Depending on Option
 Standard Large Skid Shoes
 Tapered, Heavy-Duty
 Optional 4" Pressure Gauge
 Optional Case Drain
 Deck: 1/4"
 Side Skirts: 1/4"
 Chain Guards Standard
 Optional Protective Door
 Maximum Operating Pressure: 3500 PSI

Skid Cutters

*Polycarbonate door required with this attachment.

YOU MUST ADD 11% SURCHARGE TO PRICES AS OF 8/4/21

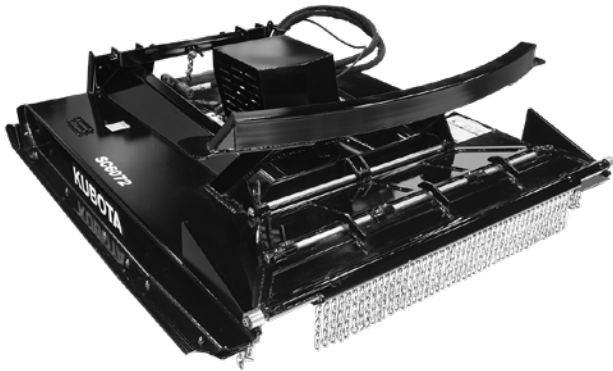
MODEL NUMBER	DESCRIPTION	APPROX. MACHINE WEIGHT	SHIPPING WEIGHT	LIST PRICE
AP-SC4060	SKID CUTTER - 60" Width Single Front Chain Guard Single Rear Chain Guard You Must Choose a Hydraulic Motor Assembly	1,361#	1,441#	\$ 5,207
-13	Hydraulic Motor: 15-25 GPM @ 3500 PSI	INC	INC	\$ 1,576
-15	Hydraulic Motor: 26-43 GPM @ 3500 PSI You May Choose any of these Options	INC	INC	\$ 1,576
-20	Case Drain Bundle (326-863A)	5#	5#	\$ 109
-30	Front Roller (326-646A)	44#	44#	\$ 551
-41	Pressure Gauge Bundle ECOR (326-867A) You Must Choose a Protective Door Option	4#	4#	\$ 334
-86	Operator Protective Door Assembly	20#	20#	\$ 428
-87	No Operator Protective Door Assembly			\$ 0
AP-SC4072	SKID CUTTER - 72" Width Single Front Chain Guard Single Rear Chain Guard You Must Choose a Hydraulic Motor Assembly	1,680#	1,727#	\$ 6,146
-14	Hydraulic Motor: 15-26 GPM @ 3500 PSI	INC	INC	\$ 1,551
-15	Hydraulic Motor: 27-43 GPM @ 3500 PSI You May Choose any of these Options	INC	INC	\$ 1,551
-20	Case Drain Bundle (326-864A)	5#	5#	\$ 109
-30	Front Roller (326-646A)	44#	44#	\$ 551
-41	Pressure Gauge Bundle ECOR (326-867A) You Must Choose a Polycarbonate Protective Door Option	4#	4#	\$ 334
-86	Operator Protective Door Assembly	40#	40#	\$ 428
-87	No Operator Protective Door Assembly			\$ 0
ACCESSORY				
326-960A	Large Flat Face Couplers w/Adaptors		3#	\$ 236

AP-SC60 Series Skid Cutters

RETURN TO INDEX

18-31 GPM

AVAILABLE FOR: SSV75 / SVL75-2



Width: 84"
 Length: 92"
 6" Cutting Capacity
 18-31 GPM
 9.9 Cu. In. Motor
 Blades 1/2" Plate
 Steel Blade Carrier
 18 Carbide Points
 Standard Large Skid Shoes
 Tapered, Heavy-Duty
 Optional 4" Pressure Gauge
 Case Drain
 Deck: 1/4"
 Side Skirts: 1/4"
 Chain Guards Standard
 Patent-Pending Bi-fold Door
 Maximum Operating Pressure: 3500 PSI

Skid Cutters

*Polycarbonate door required with this attachment.

YOU MUST ADD 11% SURCHARGE TO PRICES AS OF 8/4/21

MODEL NUMBER	DESCRIPTION	APPROX. MACHINE WEIGHT	SHIPPING WEIGHT	LIST PRICE
AP-SC6072	SKID CUTTER - 72" Width Front and Rear Chains Bi-Fold Door Pusher Bar <u>You May Choose</u>	1,980#	2,132#	\$ 12,687
-41	Pressure Gauge Bundle	4#	4#	\$ 201
	<u>You Must Choose a Polycarbonate Protective Door Option</u>			
-86	Protective Door (for skid steers not equipped with a cab door)	14#	14#	\$ 428
-87	No Protective Door			

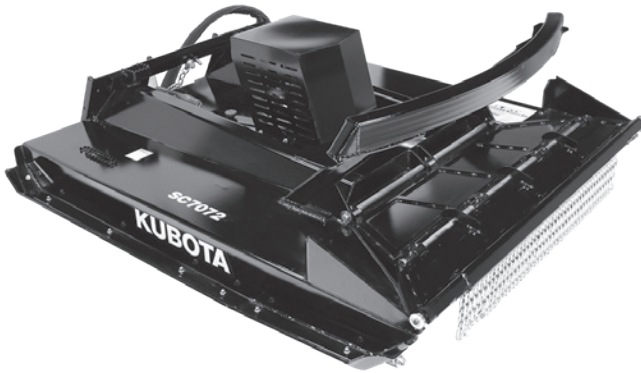
AP-SC70 Series Skid Cutters

RETURN TO INDEX

Various Flow Requirements

AVAILABLE FOR: SVL97-2

Skid Cutters



Width: 81"
 Length: 91"
 7" Cutting Capacity
 28-43 GPM
 Maximum Flow Rate 43 GPM
 11.95 Cu. In. Motor
 4 Reversible Heat-Treated Blades
 Blades 3/4" Plate
 Laminated Steel Blade Carrier
 18 Carbide Points
 Standard Large Skid Shoes
 Tapered, Heavy-Duty
 Optional 4" Pressure Gauge
 Optional Case Drain
 Deck: 1/4"
 Side Skirts: 1/4"
 Chain Guards Standard
 Unique Bi-fold Door
 Maximum Operating Pressure: 3500 PSI

*Polycarbonate door required with this attachment.

YOU MUST ADD 11% SURCHARGE TO PRICES AS OF 8/4/21

MODEL NUMBER	DESCRIPTION	APPROX. MACHINE WEIGHT	SHIPPING WEIGHT	LIST PRICE
AP-SC7072	SKID CUTTER - 72" Width Front and Rear Chains Bi-Fold Door Pusher Bar	2,568#	#2,704	\$ 14,844
<u>You May Choose any of these Options</u>				
-20	Case Drain Bundle (326-925A)	5#	5#	\$ 60
-41	Pressure Gauge Bundle (326-928A)	4#	4#	\$ 216
<u>You Must Choose a Polycarbonate Protective Door Option</u>				
-86	Protective Door (for skid steers not equipped with a cab door)	14#	14#	\$ 428
-87	No Protective Door			

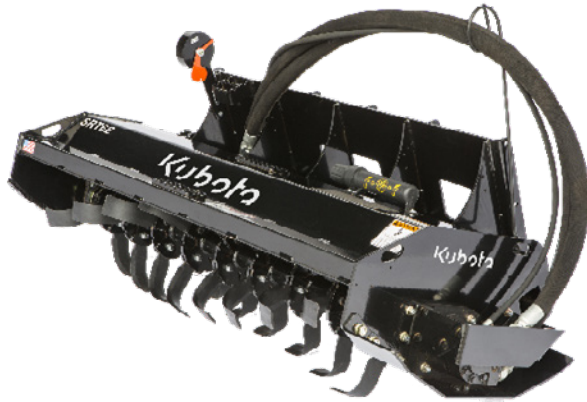
AP-SRT Skid Tillers

RETURN TO INDEX

14-42 GPM

AVAILABLE FOR: SSV65 / SSV75 / SVL75-2 / SVL97-2

Tillers



Hitch: Skid Steer
 Color: Black
 Tilling Depth: 5 1/2", 4", and 2"
 Rotor Diameter: 18.3"
 Rotor Speed:
 SRT62 LOW flow motor 143-245 RPM
 SRT62 HIGH flow motor 133-244 RPM
 SRT76 HIGH flow motor 133-244 RPM
 Recommended Hydraulic Pressure
 SRT62 LOW flow motor
 14-23 gpm: minimum 2800 psi / max of 4500 psi
 SRT62 HIGH flow motor
 23-42 gpm: minimum 2000 psi / max of 4500 psi
 SRT76 HIGH flow motor
 16-23 gpm*: minimum 2600 psi / max of 4500 psi
 92-133 Rotor RPM
 23-42 gpm: minimum 2300 psi / max of 4500 psi
 133-244 Rotor RPM
 Tines: Forged, Hardened, Bi-Directional, "C"-Shape,
 4 per Flange
 Shanks: 3/4" x 2 1/2" x 16" Steel; Standard
 62: 5 Shanks with retaining clips, Standard
 76: 6 Shanks with retaining clips, Standard
 Patent Pending Level Indicator

YOU MUST ADD 11% SURCHARGE TO PRICES AS OF 8/4/21

MODEL NUMBER	DESCRIPTION	APPROX. MACHINE WEIGHT	SHIPPING WEIGHT	LIST PRICE
AP-SRT62-10-50	62" Skid Tiller Low Flow Motor, 5 Shanks	785#	851#	\$ 6,123
AP-SRT62-11-50	62" Skid Tiller High Flow Motor, 5 Shanks	785#	851#	\$ 6,315
AP-SRT76-50	76" Skid Tiller High Flow Motor, 6 Shanks	880#	921#	\$ 7,294
Add Option No.	Coupler Option			
-20	Small Flat Faced Couplers		2#	\$ 145
-21	Large Flat Face Couplers		4#	\$ 236

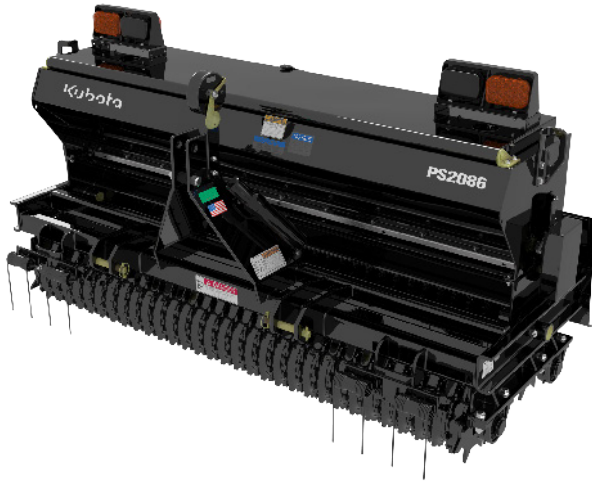
*AP-SRT76 High flow motors can be used on skid steers with 16-23 gpm with minimum working pressure of 2600 psi but rotor speed (RPM) will be reduced which could affect tilling performance.

AP-PS20 Series Skid Primary Seeders

RETURN TO INDEX

AVAILABLE FOR: SSV65 / SSV75 / SVL75-2 / SVL97-2

Seeders



Width: 79", 93.375"
 Seeding Width: 71.5", 86.125"
 Hitch: Quick Attach Skid Plate AND 3-Point
 Bi-Directional Seed Cups
 Front and Rear Floating Packer Wheels
 Ground Driven Metering
 Seed Box: One Bushel/ft, Water-tight with Agitator
 2-Speed Seed Rate Drive
 Seed Cups: 72" – 10; 86" – 12
 Front Rollers: 9.5" Dia. Packer Wheels
 72" – 31 Rings
 86" – 37 Rings
 Rear Rollers: 9.5" Dia. Packer Wheels
 72" – 30 Rings
 86" – 36 Rings
 Roller Spindles: 1.75" with Greasable Bearings
 Wind-Guarded Seed Drop
 #40 Chain, Spring-loaded, Easy Access
 Spring Tines for Track Removal
 Optional Transport Lights
 Optional Acre Meter

YOU MUST ADD 11% SURCHARGE TO PRICES AS OF 8/4/21

MODEL NUMBER	DESCRIPTION	APPROX. MACHINE WEIGHT	SHIPPING WEIGHT	LIST PRICE
AP-PS2072	20 SERIES SKID PRIMARY SEEDER - 72"	1420#	1688#	\$ 9,227
AP-PS2086	20 SERIES SKID PRIMARY SEEDER - 86"	1634#	1902#	\$ 10,080
<u>You MAY Choose these Options</u>				
-30	Acremeter (313-831A)	8#		\$ 404
-40	Transport Lights (313-992A)	44#		\$ 233

AP-BB30 Box Blade

RETURN TO INDEX

AVAILABLE FOR: SSV65 / SSV75 / SVL75-2 / SVL97-2

Dirtworking



Width: 72", 84", 96"
 Upper Frame Cross Tube: 4x6x5/16
 Lower Frame Cross Tube: 2x4x1/4
 A Frame Tubes: 4x4x5/16
 Blade Lift Pins: 1"
 Tilt Pin: 3"
 Grader Blade: 1/2" x 6", Reversible, Replaceable
 Reversible Side Cutters: AR400 Steel, 6" x 1/2"
 End Panels: Replaceable, 3/8" Grade 50
 Quick Attach Skid Plate
 Tires: 18" x 8.5" x 10" Foam Filled Turf
 3x6x1.5 Welded Lift Cylinder
 2- 2.5x5x1.25 Welded Tilt Cylinders
 16.5 x 6.63 Parabolic Mirror
 25 GPM Max. Flow and 3500 psi Max. Pressure
 Tilt Bubble Levels
 3 Mast Mounts
 14 Pin Control Harness
 Pilot Controlled Cylinder Control Valve
 Case Drain to Protect Control Valve
 Front and Rear Floating Blades
 Optional 82" Mast Assembly for 3rd Party
 2-D Laser Technology

YOU MUST ADD 11% SURCHARGE TO PRICES AS OF 8/4/21

MODEL NUMBER	DESCRIPTION	APPROX. MACHINE WEIGHT	SHIPPING WEIGHT	LIST PRICE
AP-BB3084	30 SERIES GRADING BOX BLADE - 84" Width	1,775#	2,013#	\$ 20,603
AP-BB3096	30 SERIES GRADING BOX BLADE - 96" Width	1,917#	2,114#	\$ 21,050

You MAY Choose These Options

-50	Two-Receiver Mast Assembly (301-654A)	95#		\$ 414
-----	---------------------------------------	-----	--	--------

Accessories

164765-500*	Earthworks GO! Kit Includes GO! Box and Attachment Harness			\$ 6,588
66491-05*	Dual LR410 Laser Receivers Includes Carrying Case			\$ 3,704
0794-2350*	Cables, Coil, 10-6 Quick Disconnect - Two Cables Required			\$ 451
HH-GL422N-14	Laser with RC402N Remote and CR700 Receiver			\$ 3,541
2162_Trimble	Aluminum Tripod			\$ 314

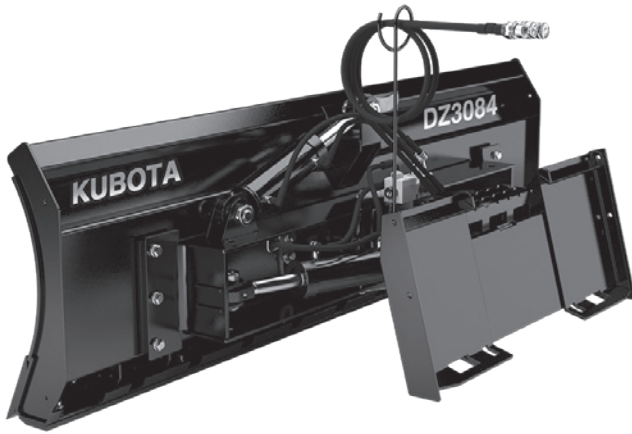
*Accessories required for complete Earthworks GO! system

AP-DZ30 Series 6-Way Dozer Blade

RETURN TO INDEX

AVAILABLE FOR: SSV65 / SSV75 / SVL75-2 / SVL97-2

Dirtworking



6-Way Tilt and Angle
 Moldboard: 3/8" w/Full Box Bracing
 Cutting Edge:
 3/4" x 8" Reversible & Replaceable
 3 Piece Design
 Tilt: Up to 10 Degrees Up and Down
 Angle: Up to 30 Degrees Both Directions
 Pivot Pins: 3"
 Cylinders: 3-1/2" x 8" Welded
 Wear Bar: 1/2" x 4" Full Length

YOU MUST ADD 11% SURCHARGE TO PRICES AS OF 8/4/21

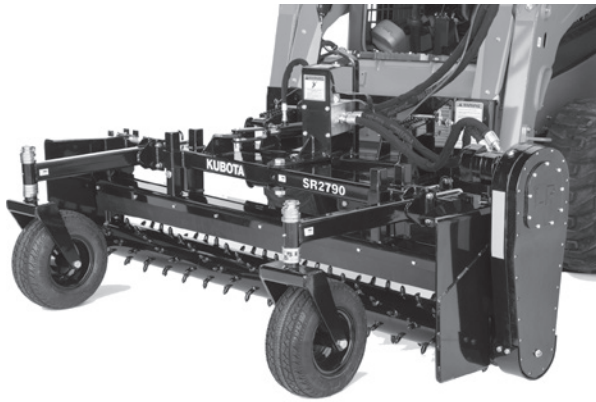
MODEL NUMBER	DESCRIPTION	APPROX. MACHINE WEIGHT	SHIPPING WEIGHT	LIST PRICE
AP-DZ3084	30 SERIES 6-WAY DOZER BLADE - 84" Width	1345#	1400#	\$ 7,386
AP-DZ3096	30 SERIES 6-WAY DOZER BLADE - 96" Width	1440#	1505#	\$ 7,800
ADD OPTION				
NUMBER	YOU MUST CHOOSE A WIRING HARNESS			
-31	Thumb Switch, Battery Connect (301-588A)	5#	5#	\$ 291
-32	14 Pin Connector (301-592A)	5#	5#	\$ 182
-33	14 Pin Connector, JD (301-593A)	5#	5#	\$ 182
-34	14 Pin Connector, JD E/H (301-594A)	5#	5#	\$ 182
-35	Thumb Switch, 2-Pin Connect (301-590A)	5#	5#	\$ 291

AP-SR27 Series Powered Rakes

RETURN TO INDEX

Minimum Hydraulics Required: 72: 12-24 gpm
90: 15-24 gpm

AVAILABLE FOR: SSV65 / SSV75 / SVL75-2



Rigid or Float Option
Manual or Hydraulic Angle
Cast Chain Housing
5/8" U-Bolts on Gauge Wheel
Drive Chain: #50 Double Continuous Roller Chain
High Tensile, Enclosed in Oil Bath
Angle Adjustment: 20 Degrees Left & 20 Degrees Right,
Forward or Reverse Angle Cylinder: 2" x 8"
End Plates with Storage Pins Gauge Wheels: 16.5" x 6.5"
Air Tires with Sealant & 3/4" Roller Bearings
and Spacer Height Adjustment
Replaceable Skid Shoes

Dirtworking

YOU MUST ADD 11% SURCHARGE TO PRICES AS OF 8/4/21

MODEL NUMBER	DESCRIPTION	APPROX. MACHINE WEIGHT	SHIPPING WEIGHT	LIST PRICE
AP-SR2772	27 SERIES SKID STEER POWERED RAKE 72" Width; Carbide Tipped Studded Roller	1101#	1126#	\$ 8,441
AP-SR2790	27 SERIES SKID STEER POWERED RAKE 90" Width; Carbide Tipped Studded Roller	1255#	1282#	\$ 9,824
<u>YOU MUST CHOOSE A HITCH OPTION</u>				
-11	Angling Float Hitch	267#	267#	\$ 1,666
-12	Angle Hitch	221#	221#	\$ 908
<u>YOU MUST CHOOSE A VALVE OPTION</u>				
-31	72" Hydraulic Valve and Cylinder (321-121A)	52#	52#	\$ 1,696
-31	90" Hydraulic Valve and Cylinder (321-123A)	54#	54#	\$ 1,719
-32	Manual Link Assembly (321-122A)	22#	22#	\$ 448
<u>YOU MAY CHOOSE ONE OF THE FOLLOWING WIRING HARNESES</u>				
-60	14 Pin Wiring Harness, DEUTSCH HD30, 73" (323-094A)	2#	2#	\$ 162
-62	2 Pin Wiring Harness w Switch, DTP (2 Pin Kubota SVL) (323-096A)	2#	2#	\$ 222
-63	Switch and Wiring Harness (323-097A)	2#	2#	\$ 162

AP-SRF27 Series Powered Rakes

[RETURN TO INDEX](#)

Minimum Hydraulics Required: 72: 12-24 gpm
90: 15-24 gpm

AVAILABLE FOR: SSV65 / SSV75 / SVL75-2 / SVL97-2

Dirtworking



- Fixed Hitch
- Cast Chain Housing
- 5/8" U-Bolts on Gauge Wheel
- No Auxiliary Function Needed
- Drive Chain: #50 Double Continuous Roller Chain
High Tensile, Enclosed in Oil Bath
- End Plates with Storage Pins Gauge Wheels:
16.5" x 6.5" Air Tires with Sealant &
3/4" Roller Bearings
and Spacer Height Adjustment
- Replaceable Skid Shoes

YOU MUST ADD 11% SURCHARGE TO PRICES AS OF 8/4/21

MODEL NUMBER	DESCRIPTION	APPROX. MACHINE WEIGHT	SHIPPING WEIGHT	LIST PRICE
AP-SRF2772	27 SERIES SKID STEER POWERED RAKE 72" Width; Carbide Tipped Studded Roller	1098#	1126#	\$ 9,482
temporarily suspended AP-SRF2790	27 SERIES SKID STEER POWERED RAKE 90" Width; Carbide Tipped Studded Roller	1256#	1282#	\$ 10,545

AP-SA20 Series Planetary Skid Augers

RETURN TO INDEX

6-30 gpm

AVAILABLE FOR: SSV65 / SSV75 / SVL75-2 / SVL97-2



Skid/Loader Plate
 Hydraulically Driven Planetary Gearbox
 Hydraulically Reversible
 2 Motor Options: High or Med. Flow
 Output Shaft: 2" Hex
 Auger Teeth: Forged, Individually Replaceable
 40 Degree Angle Installed on Flat Side
 50 Degree Angle Installed on Angled Side
 9" - 4 teeth, 12" - 4, 15" - 5, 18" - 6,
 24" - 8, 30" - 10, 36" - 12
 Tree Augers: 24" - 9, 30" - 11, 36" - 13
 Auger Pipe: 2½" ID
 Auger Flighting Thickness: ¼"
 Auger Length: 48"

Optional Flat Face Couplers
 Torque (at 100% Efficiency)
 Med-Flow: 1775 ft/lb @ 3000 PSI
 High-Flow: 2620 ft/lb @ 3000 PSI

Dirtworking

YOU MUST ADD 11% SURCHARGE TO PRICES AS OF 8/4/21

MODEL NUMBER	DESCRIPTION		APPROX. MACHINE WEIGHT	SHIPPING WEIGHT	LIST PRICE
AP-SA20-05	20 SERIES HYDRAULIC SKID AUGER Skid/Loader Plate w/8' Hoses		210#	268#	\$ 979
ADD OPTION NUMBER	YOU MUST CHOOSE A MOTOR				
-42	Med Flow Hyd Motor 10-20 GPM		71#	71#	\$ 1,537
-43	High Flow Hyd Motor 15-30 GPM		71#	71#	\$ 1,553
	YOU MAY CHOOSE COUPLERS				
-50	1/2" Flat Face Couplers (includes adaptors)		3#	3#	\$ 145
ADD OPTION NUMBER	FOR 2" HEX OUTPUT SHAFTS				
-06	6" Double Flight Auger (317-273A)		60#	60#	\$ 503
-09	9" Double Flight Auger (317-095A)		70#	70#	\$ 526
-12	12" Double Flight Auger (317-098A)		98#	98#	\$ 598
-15	15" Double Flight Auger (317-101A)		119#	119#	\$ 765
-18	18" Double Flight Auger (317-104A)		131#	131#	\$ 842
-24	24" Double Flight Auger (317-107A)		214#	214#	\$ 986
-26	24" Tree Auger (317-110A)		162#	162#	\$ 899
-30	30" Double Flight Auger (317-113A)		254#	254#	\$ 1,448
-32	30" Tree Auger (317-116A)		236#	236#	\$ 1,352
-36	36" Double Flight Auger (317-119A)		380#	380#	\$ 1,734
-38	36" Tree Auger (317-122A)		305#	305#	\$ 1,642
-70	6" Rock Auger (317-280A)		40#	40#	\$ 1,060
-71	9" Rock Auger (317-263A)		89#	89#	\$ 1,322
-72	12" Rock Auger (317-264A)		111#	111#	\$ 1,631
-73	15" Rock Auger (317-265A)		140#	140#	\$ 1,941
-74	18" Rock Auger (317-266A)		73#	73#	\$ 2,259
-75	24" Rock Auger (317-267A)		80#	80#	\$ 2,838
-86	2" Puff Auger (317-318A)		32#	32#	\$ 504

See Accessories on pg. 19

AP-SA35 Series Planetary Skid Auger

RETURN TO INDEX

15-25 gpm

AVAILABLE FOR: SSV65 / SSV75 / SVL75-2 / SVL97-2

Skid Steer Mounting Plate
 Hydraulically Driven Planetary Gearbox
 Hydraulically Reversible
 Output Shaft: 2" Hex or 2⁹/₁₆" OD Round
 Auger Teeth: Forged, Individually Replaceable
 40 Degree Angle Installed on Flat Side
 50 Degree Angle Installed on Angled Side
 9" - 4 teeth, 12" - 4, 15" - 5, 18" - 6,
 24" - 8, 30" - 10, 36" - 12
 Tree Augers: 24" - 9, 30" - 11, 36" - 13

Auger Pipe: 2¹/₂" ID
 Auger Flighting Thickness: 1/4"
 Auger Length: 48"
 Pilot: Cast Steel, 3 Drill Points
 Includes 8' Hose & 1/2" Flat Face Couplers

Dirtworking

YOU MUST ADD 11% SURCHARGE TO PRICES AS OF 8/4/21

MODEL NUMBER	DESCRIPTION	MACHINE WEIGHT	SHIPPING WEIGHT	LIST PRICE
AP-SA35-01	35 SERIES HYDRAULIC SKID AUGER 2 ⁹ / ₁₆ " Round Output Shaft 15-25 GPM Hydraulic Motor	372#	446#	\$ 2,893
ADD OPTION NUMBER	FOR 2⁹/₁₆" ROUND OUTPUT SHAFTS			
-10	9" Double Flight Auger (317-096A)	70#	70#	\$ 526
-13	12" Double Flight Auger (317-099A)	98#	98#	\$ 598
-16	15" Double Flight Auger (317-102A)	119#	119#	\$ 765
-19	18" Double Flight Auger (317-105A)	131#	131#	\$ 842
-25	24" Double Flight Auger (317-108A)	214#	214#	\$ 986
-27	24" Tree Auger (317-111A)	162#	162#	\$ 899
-31	30" Double Flight Auger (317-114A)	285#	285#	\$ 1,448
-33	30" Tree Auger (317-117A)	236#	236#	\$ 1,352
-37	36" Double Flight Auger (317-120A)	380#	380#	\$ 1,734
-39	36" Tree Auger (317-123A)	305#	305#	\$ 1,642
-76	6" Rock Auger (317-281A)	60#	60#	\$ 1,060
-77	9" Hub Rock Auger (317-268A)	95#	95#	\$ 1,322
-78	12" Hub Rock Auger (317-269A)	116#	116#	\$ 1,631
-79	15" Hub Rock Auger (317-270A)	149#	149#	\$ 1,941
-80	18" Hub Rock Auger (317-271A)	205#	205#	\$ 2,259
-81	24" Hub Rock Auger (317-272A)	256#	256#	\$ 2,838
-87	2" Puff Auger (317-319A)	32#	32#	\$ 504
AP-SA35-02	35 SERIES HYDRAULIC POST HOLE DIGGER 2" Hex Output Shaft 15-25 GPM Hydraulic Motor	372#	446#	\$ 2,893
ADD OPTION NUMBER	FOR 2" HEX OUTPUT SHAFTS			
-06	6" Double Flight Auger (317-273A)	60#	60#	\$ 503
-09	9" Double Flight Auger (317-095A)	70#	70#	\$ 526
-12	12" Double Flight Auger (317-098A)	98#	98#	\$ 598
-15	15" Double Flight Auger (317-101A)	119#	119#	\$ 765
-18	18" Double Flight Auger (317-104A)	131#	131#	\$ 842
-24	24" Double Flight Auger (317-107A)	214#	214#	\$ 986
-26	24" Tree Auger (317-110A)	162#	162#	\$ 899
-30	30" Double Flight Auger (317-113A)	254#	254#	\$ 1,448
-32	30" Tree Auger (317-116A)	236#	236#	\$ 1,352
-36	36" Double Flight Auger (317-119A)	380#	380#	\$ 1,734
-38	36" Tree Auger (317-122A)	305#	305#	\$ 1,642
-70	6" Rock Auger (317-280A)	60#	60#	\$ 1,060
-71	9" Hex Rock Auger (317-263A)	95#	95#	\$ 1,322
-72	12" Hex Rock Auger (317-264A)	116#	116#	\$ 1,631
-73	15" Hex Rock Auger (317-265A)	149#	149#	\$ 1,941
-74	18" Hex Rock Auger (317-266A)	205#	205#	\$ 2,259
-75	24" Hex Rock Auger (317-267A)	256#	256#	\$ 2,838
-86	2" Puff Auger (317-318A)	32#	32#	\$ 504

AP-EA20 Series Excavator Auger

RETURN TO INDEX

6-30 gpm

AVAILABLE FOR: KX71 / KX018-4 / KX033 / KX040 / KX057 / KX080 / U17 / U27 / U35 / U55



Dirtworking

Choose Excavator Mount
 Hydraulically Driven Planetary Gearbox
 Hydraulically Reversible
 3 Motor Options: 6-15 gpm, 10-20 gpm, 15-30 gpm
 Output Shaft: 2" Hex
 Auger Teeth: Forged, Individually Replaceable
 40 Degree Angle Installed on Flat Side
 50 Degree Angle Installed on Angled Side
 9" - 4 teeth, 12" - 4, 15" - 5, 18" - 6,
 24" - 8, 30" - 10, 36" - 12
 Tree Augers: 24" - 9, 30" - 11, 36" - 13
 Auger Pipe: 2 1/2" ID
 Auger Flighting Thickness: 5/16"
 Auger Length: 48"
 Rock Augers: 6", 9", 12", 15", 18", 24"
 Torque: Up to 2620 ft/lb @ 3000 PSI*

YOU MUST ADD 11% SURCHARGE TO PRICES AS OF 8/4/21

MODEL NUMBER	DESCRIPTION	APPROX. MACHINE WEIGHT	SHIPPING WEIGHT	LIST PRICE
AP-EA20	20 SERIES HYDRAULIC POST HOLE DIGGER No Mount	42#	116#	\$ 445
AP-EA20-01	20 SERIES HYDRAULIC POST HOLE DIGGER for use with KX018-4 and U17** (317-249A)	94#	168#	\$ 678
AP-EA20-02	20 SERIES HYDRAULIC POST HOLE DIGGER for use with U25 and U27 (317-248A)	115#	189#	\$ 758
AP-EA20-03	20 SERIES HYDRAULIC POST HOLE DIGGER for use with KX033, KX040, KX71, KX91, and U35 (317-247A)	124#	198#	\$ 751
AP-EA20-04	20 SERIES HYDRAULIC POST HOLE DIGGER for use with KX057 and U55 (317-250A)	179#	253#	\$ 870
AP-EA20-05	20 SERIES HYDRAULIC POST HOLE DIGGER for use with KX080 (317-251A)	206#	280#	\$ 949
ADD OPTION NUMBER	<u>YOU MAY CHOOSE A HOSE KIT</u>			
-20	32" Hose Kit for U27 (317-285A)	3#	3#	\$ 128
-21	54" Hose Kit for KX033, KX040, KX71, KX91, U35, U55, and KX057 (317-284A)	9#	9#	\$ 291
-22	74" Hose Kit for KX080 (317-283A)	3#	3#	\$ 291
-23	48" Hose Kit for KX018-14 and U17 (317-297A)	3#	3#	\$ 154
ADD OPTION NUMBER	<u>YOU MAY CHOOSE A TRANSPORT CRADLE</u>			
-31	Cradle (317-246A)	28#	28#	\$ 140
ADD OPTION NUMBER	<u>YOU MUST CHOOSE A MOTOR</u>			
-35	6-15 gpm	89#	89#	\$ 1,553
-36	10-20 gpm	89#	89#	\$ 1,537
-37	15-30 gpm	91#	91#	\$ 1,553

*Torque based on theoretical 100% efficiency for comparison purposes only.

** A maximum auger size of 24" is recommended with the KX018-4/U17 mount. Excavator stability and digging performance will suffer with augers larger than 24".

See Auger Options on pg. 18
 See Accessories on pg. 19

AP-EA35 Series Excavator Auger

RETURN TO INDEX

15-30 gpm

AVAILABLE FOR: KX018 / KX040 / KX057/ KX080 / U17 / U25 / U27 / U55

Dirtworking



Choose Excavator Mount
 Hydraulically Driven Planetary Gearbox
 Hydraulically Reversible
 Output Shaft: 2" Hex or 2⁹/₁₆" OD Round
 Auger Teeth: Forged, Individually Replaceable
 40 Degree Angle Installed on Flat Side
 50 Degree Angle Installed on Angled Side
 9" - 4 teeth, 12" - 4, 15" - 5, 18" - 6,
 24" - 8, 30" - 10, 36" - 12
 Tree Augers: 24" - 9, 30" - 11, 36" - 13
 Auger Pipe: 2¹/₂" ID
 Auger Flighting Thickness: 5/16"
 Auger Length: 48"
 Rock Augers: 6", 9", 12", 15", 18", 24"
 Pilot: Cast Steel, 3 Drill Points
 Torque: Up to 2732 ft/lb @ 3000 PSI*

YOU MUST ADD 11% SURCHARGE TO PRICES AS OF 8/4/21

MODEL NUMBER	DESCRIPTION	APPROX. MACHINE WEIGHT	SHIPPING WEIGHT	LIST PRICE
AP-EA35	35 SERIES HYDRAULIC POST HOLE DIGGER No Mount	414#	432#	\$ 687
AP-EA35-01	35 SERIES HYDRAULIC POST HOLE DIGGER For use with KX018 and U17** (317-249A)	466#	497#	\$ 920
AP-EA35-02	35 SERIES HYDRAULIC POST HOLE DIGGER For use with U25 and U27 (317-248A)	471#	503#	\$ 1,000
AP-EA35-03	35 SERIES HYDRAULIC POST HOLE DIGGER For use with KX040, KX71, KX91, and U35 (317-247A)	496#	524#	\$ 993
AP-EA35-04	35 SERIES HYDRAULIC POST HOLE DIGGER For use with KX057 and U55 (317-250A)	551#	578#	\$ 1,112
AP-EA35-05	35 SERIES HYDRAULIC POST HOLE DIGGER For use with KX080 (317-251A)	578#	599#	\$ 1,191
ADD OPTION NUMBER	YOU MAY CHOOSE A HOSE KIT			
-20	32" Hose Kit for U27 (317-285A)	3#	3#	\$ 128
-21	54" Hose Kit for KX040, KX71, KX91, U35, U55, and KX057 (317-284A)	3#	3#	\$ 291
-22	74" Hose Kit for KX080 (317-283A)	3#	3#	\$ 291
-23	48" Hose Kit for KX018 and U17 (317-297A)	3#	3#	\$ 154
ADD OPTION NUMBER	YOU MAY CHOOSE A TRANSPORT CRADLE			
-31	Cradle (317-255A)	28#	28#	\$ 154
ADD OPTION NUMBER	YOU MUST CHOOSE A MOTOR			
-35	Hydraulic Motor/Gearbox: 2-9/16" Round			\$ 1,644
-36	Hydraulic Motor/Gearbox: 2" Hex Shaft			\$ 1,644

*Torque based on theoretical 100% efficiency for comparison purposes only.

** A maximum auger size of 24" is recommended with the KX018/U17 mount. Excavator stability and digging performance will suffer with augers larger than 24".

See Auger Options on pg. 18

See Accessories on pg. 19

YOU MUST ADD 11% SURCHARGE TO PRICES AS OF 8/4/21

ADD OPTION NUMBER	FOR 2³/₁₆" ROUND OUTPUT SHAFTS - for AP-EA35 MODEL ONLY	APPROX. MACHINE WEIGHT	SHIPPING WEIGHT	LIST PRICE
-51	9" Double Flight Auger (317-096A)	78#	78#	\$ 526
-52	12" Double Flight Auger (317-099A)	113#	113#	\$ 598
-53	15" Double Flight Auger (317-102A)	116#	116#	\$ 765
-54	18" Double Flight Auger (317-105A)	135#	135#	\$ 842
-55	24" Double Flight Auger (317-108A)	206#	206#	\$ 986
-56	24" Tree Auger (317-111A)	209#	209#	\$ 899
-57	30" Double Flight Auger (317-114A)	224#	224#	\$ 1,448
-58	30" Tree Auger (317-117A)	228#	228#	\$ 1,352
-59	36" Double Flight Auger (317-120A)	280#	280#	\$ 1,734
-60	36" Tree Auger (317-123A)	289#	289#	\$ 1,642
-76	6" Rock Auger (317-281A)	60#	60#	\$ 1,060
-77	9" Hub Rock Auger (317-268A)	95#	95#	\$ 1,322
-78	12" Hub Rock Auger (317-269A)	116#	116#	\$ 1,631
-79	15" Hub Rock Auger (317-270A)	149#	149#	\$ 1,941
-80	18" Hub Rock Auger (317-271A)	205#	205#	\$ 2,259
-81	24" Hub Rock Auger (317-272A)	256#	256#	\$ 2,838
-87	2" Puff Auger (317-319A)	32#	32#	\$ 504
ADD OPTION NUMBER FOR 2" HEX OUTPUT SHAFTS - FOR AP-EA20 and AP-EA35 MODELS				
-40	6" Double Flight Auger (317-273A)	39#	39#	\$ 503
-41	9" Double Flight Auger (317-095A)	78#	78#	\$ 526
-42	12" Double Flight Auger (317-098A)	113#	113#	\$ 598
-43	15" Double Flight Auger (317-101A)	116#	116#	\$ 765
-44	18" Double Flight Auger (317-104A)	135#	135#	\$ 842
-45	24" Double Flight Auger (317-107A)	206#	206#	\$ 986
-46	24" Tree Auger (317-110A)	209#	209#	\$ 899
-47	30" Double Flight Auger (317-113A)	224#	224#	\$ 1,448
-48	30" Tree Auger (317-116A)	228#	228#	\$ 1,352
-49	36" Double Flight Auger (317-119A)	280#	280#	\$ 1,734
-50	36" Tree Auger (317-122A)	289#	289#	\$ 1,642
-70	6" Rock Auger (317-280A)	60#	60#	\$ 1,060
-71	9" Hex Rock Auger (317-263A)	95#	95#	\$ 1,322
-72	12" Hex Rock Auger (317-264A)	116#	116#	\$ 1,631
-73	15" Hex Rock Auger (317-265A)	149#	149#	\$ 1,941
-74	18" Hex Rock Auger (317-266A)	205#	205#	\$ 2,259
-75	24" Hex Rock Auger (317-267A)	256#	256#	\$ 2,838
-86	2" Puff Auger (317-318A)	32#	32#	\$ 504

YOU MUST ADD 11% SURCHARGE TO PRICES AS OF 8/4/21

PART NUMBER	DESCRIPTION	APPROX. WEIGHT	SHIPPING WEIGHT	LIST PRICE
AUGER EXTENSIONS				
317-129A	2" Hex - 24" Auger Extension - SA20, SA35, EA20, EA35	34#	34#	\$ 562
317-131A	2" Hex - 48" Auger Extension - SA20, SA35, EA20, EA35	58#	58#	\$ 818
317-133A	2 ⁹ / ₁₆ " Round - 24" Auger Extension - SA35, EA35	25#	25#	\$ 546
317-135A	2 ⁹ / ₁₆ " Round - 48" Auger Extension - SA35, EA35	37#	37#	\$ 693
ROCK HEADS				
317-274A	6" Bolt-on Rock Head - SA20, SA35, EA20, EA35	24#	24#	\$ 598
317-275A	9" Bolt-on Rock Head - SA20, SA35, EA20, EA35	36#	36#	\$ 734
317-276A	12" Bolt-on Rock Head - SA20, SA35, EA20, EA35	43#	43#	\$ 796
317-277A	15" Bolt-on Rock Head - SA20, SA35, EA20, EA35	47#	47#	\$ 854
317-278A	18" Bolt-on Rock Head - SA20, SA35, EA20, EA35	62#	62#	\$ 902
317-279A	24" Bolt-on Rock Head - SA20, SA35, EA20, EA35	79#	79#	\$ 1,057
SKID STEER MOUNT				
317-083A	Skid Steer Mount for EA35	196#	196#	\$ 718
317-215A	Skid Steer Mount for EA20	196#	196#	\$ 718
EXCAVATOR MOUNTS				
317-249A	KX018/U17 Mount	52#	52#	\$ 233
317-248A	U25/U27 Mount	73#	73#	\$ 313
317-247A	KX040/KX71/KX91/U35 Mount	82#	82#	\$ 306
317-250A	KX057/U55 Mount	137#	137#	\$ 425
317-251A	KX080 Mount	164#	164#	\$ 504

AP-RP30 Ripper

RETURN TO INDEX

AVAILABLE FOR: SSV65 / SSV75 / SVL75-2 / SVL97-2



Working Width: 78-3/4"
Overall Width: 68-1/2"
Hitch Type: Skid Steer Quick Attach
Number of Shanks 5
Replaceable Shank Tips
Number of Shank Adjustments 4 (2", 4", 6" and 8" deep)
Skid Shoe Construction Bolt-on 5/16" Steel Plate
Shank Tube Construction 5" x 5" Square Tube with
Reinforcement Plate Around Bottom of Shank Opening
Level Indicator (Patent Pending)

Dirtworking

YOU MUST ADD 11% SURCHARGE TO PRICES AS OF 8/4/21

MODEL NUMBER	DESCRIPTION	APPROX. MACHINE WEIGHT	SHIPPING WEIGHT	LIST PRICE
AP-RP30	30 SERIES SKID RIPPER - 68" Width	392#	402#	\$ 1,981

temporarily suspended

AP-SG25 Series Skid Graders

[RETURN TO INDEX](#)

AVAILABLE FOR: SSV65 / SSV75 / SVL75-2 / SVL97-2

Dirtworking



Ripper Teeth Standard
 Bi-directional Blades
 Correct Hitch Angle
 Bucket Carrier on Top
 Working Width: 72", 84"
 Overall Width: 6'9", 7'9"
 Overall Length: 56"
 Side Panel Height: 14⁵/₈"
 Side Panel Length: 50"
 Side Panel Thickness: 1/4", with 2³/₄" Formed Edges
 Front Beam: 4" x 4", 5/16" Wall Tubing
 Rear Beam: 3" x 3", 3/16" Wall Tubing
 Skid Shoes: 3/8" x 3", Replaceable
 Ripper Teeth: Heat Treated
 6 ea on 72"
 7 ea on 84"
 Cutting Edges: 2 ea, 1/2" x 6" High Carbon,
 Heat Treated, Reversible & Replaceable

YOU MUST ADD 11% SURCHARGE TO PRICES AS OF 8/4/21

MODEL NUMBER	DESCRIPTION	APPROX. MACHINE WEIGHT	SHIPPING WEIGHT	LIST PRICE
AP-SG2572	25 SERIES SKID GRADER - 72" Width - 6 Shanks	892#	990#	\$ 2,752
AP-SG2584	25 SERIES SKID GRADER - 84" Width - 7 Shanks	966#	1066#	\$ 2,953

AP-VRS & VRC30 Series

[RETURN TO INDEX](#)

AVAILABLE FOR: SSV65 / SSV75 / SVL75-2 / SVL97-2

Dirtworking



Motor: 16-25 GPM
 Hydraulic Pressure: 3,550 PSI
 Hitch: Universal Quick-Attach
 Operating Weight:
 VRC3072: 2,239 lbs, VRC3084: 2,487 lbs
 VRS3072: 2,087 lbs, VRS3084: 2,310 lbs
 Length: 37"
 Height: 28"
 Working Width: 72 Models: 73"; 84 Models: 85"
 Drum Width: 72 Models: 72"; 84 Models: 84"
 Drum Dia.: 20"
 Drum Oscillation: 15°
 Standard Mudscrapers
 Frequency: 2,100 RPM @ 20GPM, 2,520 RPM @ 24GPM
 Cleats per Drum: VRC3072: 144, VRC3072: 168
 (VRC only)

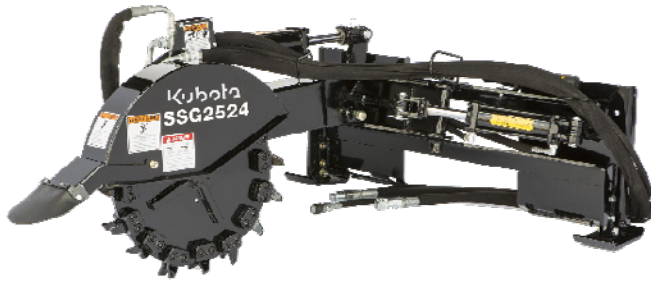
YOU MUST ADD 11% SURCHARGE TO PRICES AS OF 8/4/21

MODEL NUMBER	DESCRIPTION	APPROX. WEIGHT	SHIPPING WEIGHT	LIST PRICE
AP-VRS3072	30 SERIES VIBRATORY ROLLER Smooth Drum, 72"	2,118#	2,196#	\$ 11,605
AP-VRS3084	30 SERIES VIBRATORY ROLLER Smooth Drum, 84"	2,367#	2,465#	\$ 12,178
AP-VRC3072	30 SERIES VIBRATORY ROLLER Cleated Drum, 72"	2,238#	2,316#	\$ 13,693
AP-VRC3084	30 SERIES VIBRATORY ROLLER Cleated Drum, 84"	2,488#	2,585#	\$ 14,520

AP-SSG25 Series Stump Grinder

RETURN TO INDEX

AVAILABLE FOR: SSV65 / SSV75 / SVL75-2 / SVL97-2



Overall Mounting Width: 48"
 Overall Length (w/o Shielding): 60"
 Drive System: Hydraulic Motor w/Electric over Hydraulics
 Hydraulic Requirements: 17-32 gpm
 Angle & Lift Cylinders: 3" x 6" Stroke
 w/1 1/4" Rod Diameter
 Hydraulic Lines & Hoses: 3/4"
 Cutting Wheel: 1/2" Thick x 24" Diameter
 w/Carbide Teeth
 Number of Carbide Teeth: 32
 Cutting Wheel Speed: 640 rpm @ 18 gpm
 Cutting Arc: 55 Degrees
 Max Cutting Depth: 8"
 Greasable Hinge Points: Yes
 Main Frame: 6" x 6" x 1/4" Tube

Dirtworking

YOU MUST ADD 11% SURCHARGE TO PRICES AS OF 8/4/21

MODEL NUMBER	DESCRIPTION	APPROX. MACHINE WEIGHT	SHIPPING WEIGHT	LIST PRICE
AP-SSG2524	25 SERIES STUMP GRINDER 24" Diameter Cutting Wheel	455#	565#	\$ 7,149
ADD OPTION NUMBER				
-20	Flat-Faced Hydraulic Quick Couplers (326-627A)	1#	1#	\$ 145
-31	Control Harness - Battery Connection with Switch (370-134A)	5#	5#	\$ 308
-32	14 Pin Wiring Harness (Kubota SVL & Others) (370-336A)	3#	3#	\$ 179
-35	2 Pin Wiring Harness (Kubota SVL w/0 14 Pin Connector) (370-434A)	2#	2#	\$ 363
-90	SSL/SVL Case Drain Coupler	8#	8#	\$ 57

NOTE: If attaching to a Kubota skid steer, route hydraulic hoses through Kubota's SVL or SSV Hose Stay. Purchase SVL Hose Stay #S6689 or SSV Hose Stay #77700-07225. Refer to the Operator's Manual for more instructions.

AP-SSG20 Series Stump Grinder

RETURN TO INDEX

Dirtworking

AVAILABLE FOR: SCL1000, U27, KX71, KX033, U35, KX040, KX057, SSV65



Fits Compact Loaders, Skid Steers, Compact Excavators
 Optional Mounts
 Direct Drive
 15 Wearsharp® Teeth
 8-15 GPM

YOU MUST ADD 11% SURCHARGE TO PRICES AS OF 8/4/21

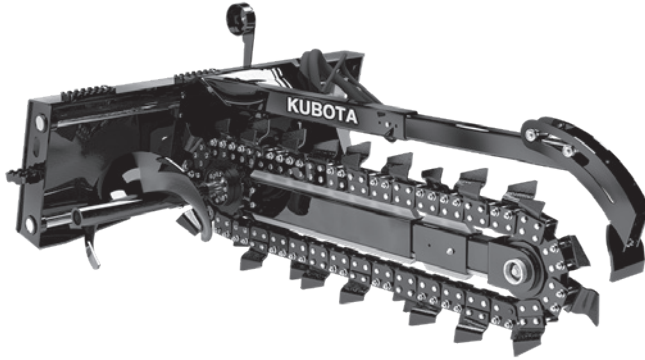
MODEL NUMBER	DESCRIPTION		APPROX. MACHINE WEIGHT	SHIPPING WEIGHT	LIST PRICE
AP-SSG2024	20 SERIES STUMP GRINDER 24" Diameter Cutting Wheel		312#	358#	\$ 4,420
ADD OPTION NUMBER					
MUST CHOOSE A MOUNT OPTION					
-01	Cii Mount	(328-187A)	82#	82#	\$ 400
-03	SS Mount	(328-193A)	168#	168#	\$ 595
-04	Compact Excavator Mount	(328-189A)	85#	85#	\$ 320
MUST CHOOSE IF -04 OPTION SELECTED					
-41	Bolt-on Mount, U27	(328-195A)	98#		\$ 195
-42	Bolt-on Mount, KX71/KX033/U35/KX040	(333-184A)	124#		\$ 285
-43	Bolt-on Mount, KX057	(333-185A)	139#		\$ 340
MAY SELECT A HOSE OPTION					
-51	90" CUL Hose Kit	(328-232A)	6		\$ 210
-52	100" SS Hose Kit	(328-233A)	7#		\$ 260
-53	60" Ex Hose Kit	(328-234A)	5#		\$ 300

NOTE: If attaching to a Kubota skid steer, route hydraulic hoses through Kubota's SVL or SSV Hose Stay. Purchase SVL Hose Stay #S6689 or SSV Hose Stay #77700-07225. Refer to the Operator's Manual for more instructions.

AP-TR Series Trencher

RETURN TO INDEX

AVAILABLE FOR: SSV65 / SSV75 / SVL75-2 / SVL97-2



- 58" Frame Width
- 48", 60" Depths
- 15-24 gpm, 25-40 gpm Motor Options
- FF Couplers on 15-24 gpm
- Large FF Couplers on 24-40 gpm
- 3600 psi Operating Pressure
- Manual or Hydraulic Sideshift
- 6", 8", 10" Width Chain Options
- 2-Pitch, 4-Pitch, and Combo Chain Options
- Patented Depth Gauge
- Standard Spoil Auger, 15½" Diameter
- Grease Cylinder Tensioning
- Crumber Shoe to Clear Trench

Dirtworking

YOU MUST ADD 11% SURCHARGE TO PRICES AS OF 8/4/21

MODEL NUMBER	DESCRIPTION	APPROX. MACHINE WEIGHT	SHIPPING WEIGHT	LIST PRICE
AP-TR48-10	48" TRENCHER - 15-24 GPM MOTOR	1276#	1374#	\$ 7,315
AP-TR48-11	48" TRENCHER - 24-40 GPM MOTOR	1283#	1381#	\$ 7,790
AP-TR60-10	60" TRENCHER - 15-24 GPM MOTOR	1304#	1402#	\$ 7,315
AP-TR60-11	60" TRENCHER - 24-40 GPM MOTOR	1311#	1409#	\$ 7,790

Trencher Options and Chain Selection Guide on following pages.

YOU MUST ADD 11% SURCHARGE TO PRICES AS OF 8/4/21

ADD OPTION NUMBER	Description	APPROX. MACHINE WEIGHT	SHIPPING WEIGHT	LIST PRICE
<u>You MUST Choose a Chain (48" Only)</u>				
-30	2 Pitch Chain, Standard Cup, 6" (350-072A)			\$ 1,247
-31	2 Pitch Chain, Standard Cup, 8" (350-170A)			\$ 1,520
-32	2 Pitch Chain, Standard Cup, 10" (350-171A)			\$ 1,698
-34	4 Pitch Chain, Standard Cup, 6" (350-173A)			\$ 980
-35	4 Pitch Chain, Standard Cup, 8" (350-174A)			\$ 1,092
-36	4 Pitch Chain, Standard Cup, 10" (350-175A)			\$ 1,413
-38	Scorpion and Cup Chain, 6" (350-177A)			\$ 2,191
-39	Scorpion and Cup Chain, 8" (350-178A)			\$ 2,482
-40	Scorpion and Cup Chain, 10" (350-179A)			\$ 2,827
-42	Alligator and Cup Chain, 6" (350-181A)			\$ 2,191
-43	Alligator and Cup Chain, 8" (350-182A)			\$ 2,488
-44	Alligator and Cup Chain, 10" (350-183A)			\$ 3,207
<u>You MUST Choose a Chain (60" Only)</u>				
-30	2 Pitch Chain, Standard Cup, 6" (350-129A)			\$ 1,431
-31	2 Pitch Chain, Standard Cup, 8" (350-185A)			\$ 1,734
-32	2 Pitch Chain, Standard Cup, 10" (350-186A)			\$ 2,020
-34	4 Pitch Chain, Standard Cup, 6" (350-188A)			\$ 1,123
-35	4 Pitch Chain, Standard Cup, 8" (350-189A)			\$ 1,252
-36	4 Pitch Chain, Standard Cup, 10" (350-191A)			\$ 1,497
-38	Scorpion and Cup Chain, 6" (350-193A)			\$ 2,499
-39	Scorpion and Cup Chain, 8" (350-196A)			\$ 2,838
-40	Scorpion and Cup Chain, 10" (350-197A)			\$ 3,088
-42	Alligator and Cup Chain, 6" (350-199A)			\$ 2,494
-43	Alligator and Cup Chain, 8" (350-201A)			\$ 2,844
-44	Alligator and Cup Chain, 10" (350-202A)			\$ 3,989
<u>You MUST Choose a Sideshift Option</u>				
-60	Hydraulic Side Shift	28#	28#	\$ 802
-61	Manual Side Shift	7#	7#	\$ 89
<u>You MUST Choose a Crumber Shoe</u>				
-70	6" Crumber Shoe	7#	7#	\$ 24
-71	8" Crumber Shoe	9#	9#	\$ 26
-72	10" Crumber Shoe	12#	12#	\$ 29

TRENCHER CHAIN SELECTION GUIDE

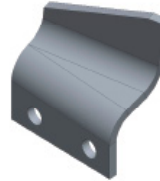
2 PITCH CHAIN

Standard Cup Tooth Every Station
 Light to moderately compacted, sandy soils



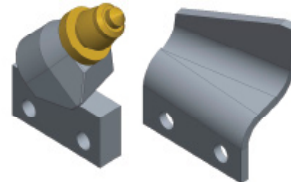
4 PITCH CHAIN

Standard Cup Tooth Every Other Station
 Wet, sticky conditions



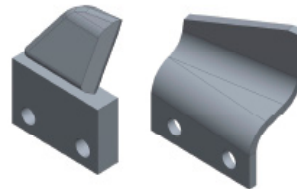
ALLIGATOR & CUP TEETH

Combination 50/50
 Highly compacted soils, clay, shale or frozen ground



SCORPION & CUP TEETH

Combination 50/50
 Compacted or rocky soil - Not recommended for use in normal conditions



CHAIN WIDTHS

6" Wide



8" Wide



10" Wide



CHAIN AND CUTTER RECOMMENDATIONS FOR VARIOUS DIGGING CONDITIONS

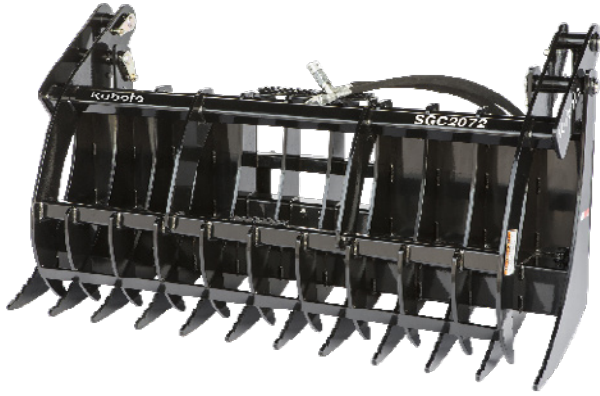
CHAIN SYSTEM	ROCKY SOIL	HARD SOIL	MEDUM SOIL	SOFT SOIL	SANDY
4 pitch cup			***	***	**
2 pitch cup		**	***	***	***
Scorpion & cup	***	***	***	***	
Alligator & cup	***	***	***	**	

AP-SGC20 Series Claw Grapples

RETURN TO INDEX

AVAILABLE FOR: SSV65 / SSV75 / SVL75-2 / SVL97-2

Material Handling



Closed Height: 39"
 Number of Bottom Teeth: 12, 14
 Number of Top Teeth: 11, 13
 Spacing of Teeth: 6"
 Tooth Thickness: 1/2"
 Working Length of Teeth: 15"
 Hydraulic Cylinder: 2 Qty, 3" x 10" x 1 1/4" Rod
 Max. Jaw Opening: 50"
 Tine Material: High Tensile AR400

*Hoses and fittings are options.



YOU MUST ADD 11% SURCHARGE TO PRICES AS OF 8/4/21

<u>MODEL NUMBER</u>	<u>DESCRIPTION</u>	<u>APPROX. MACHINE WEIGHT</u>	<u>SHIPPING WEIGHT</u>	<u>LIST PRICE</u>
AP-SGC2072	20 SERIES CLAW GRAPPLE - 72" Width	896#	981#	\$ 5,162
AP-SGC2084	20 SERIES CLAW GRAPPLE - 84" Width	1000#	1,086#	\$ 5,868
ADD				
<u>OPTION NO</u>				
-11	Hoses & Flat Face Fitting Bundle 76" (380-063A)	9#	9#	\$ 259

NOTE: If attaching to a Kubota Skid Steer, route hydraulic hoses through Kubota's SVL or SSV Hose Stay. Purchase SVL Hose Stay #S6689 or SSV Hose Stay #77700-07225. Refer to the Operator's Manual for more instructions.

AP-SGR15 Series Rock Grapples

RETURN TO INDEX

AVAILABLE FOR: SSV65 / SSV75 / SVL75-2 / SVL97-2



Closed Height: 30³/₄"
 Number of Bottom Teeth: 23, 25
 Spacing of Teeth: 3"
 Tooth Thickness: ³/₈"
 Working Length of Teeth: 38"
 Hydraulic Cylinder: 2" x 8" x 1¹/₄" Rod
 Max. Jaw Opening: 37"
 Tine Material: High Strength Grade 80 Material

*Hoses and fittings are options.

Material Handling

YOU MUST ADD 11% SURCHARGE TO PRICES AS OF 8/4/21

temporarily suspended

MODEL NUMBER	DESCRIPTION		APPROX. MACHINE WEIGHT	SHIPPING WEIGHT	LIST PRICE
AP-SGR1566-01	15 SERIES ROCK GRAPPLE - 66" Width		855#	925#	\$ 4,338
AP-SGR1572-01	15 SERIES ROCK GRAPPLE - 72" Width		904#	974#	\$ 4,495
AP-SGR1578-01	15 SERIES ROCK GRAPPLE - 78" Width		938#	1008#	\$ 4,651
ADD OPTION NO.					
-11	Hoses & Flat Face Fitting Bundle 95"	(380-061A)	20#	20#	\$ 259
-21	Hydraulic Cylinder Shields - 2 each	(380-023A)	34#	34#	\$ 160

NOTE: If attaching to a Kubota Skid Steer, route hydraulic hoses through Kubota's SVL or SSV Hose Stay. Purchase SVL Hose Stay #S6689 or SSV Hose Stay #77700-07225. Refer to the Operator's Manual for more instructions.

AP-RG30 Series Root Grapples

RETURN TO INDEX

AVAILABLE FOR: SSV65 / SSV75 / SVL75-2 / SVL97-2



- 1/2" Flat Faced Couplers Included
- Gusseted 1/2" Frame Tines
- 3/4" Grapple Tines
- Greaseable Pivot Points
- 10" Wide Tine Spacing
- Steel Hydraulic Lines
- 2 1/2" x 8" x 1 1/4" Cylinders
- Opening: 39 5/8"
- Depth: 31"
- Hydraulic Cylinder Shield Kit is now standard

Material Handling

YOU MUST ADD 11% SURCHARGE TO PRICES AS OF 8/4/21

MODEL NUMBER	DESCRIPTION		APPROX. MACHINE WEIGHT	SHIPPING WEIGHT	LIST PRICE
AP-RG3068-21	30 SERIES ROOT GRAPPLE - 68" Width		951#	1,042#	\$ 4,157
AP-RG3074-21	30 SERIES ROOT GRAPPLE - 74" Width		967#	1,058#	\$ 4,599
AP-RG3080-21	30 SERIES ROOT GRAPPLE - 80" Width		1,064#	1,155#	\$ 5,092
ADD OPTION NO.					
-31	Cylinder Rod Shield Kit (380-278A)		37#	37#	\$ 194

NOTE: If attaching to a Kubota Skid Steer, route hydraulic hoses through Kubota's SVL or SSV Hose Stay. Purchase SVL Hose Stay #S6689 or SSV Hose Stay #77700-07225. Refer to the Operator's Manual for more instructions.

AP-SL Series Standard-Duty Buckets

RETURN TO INDEX

AVAILABLE FOR: SSV65 / SSV75 / SVL75-2 / SVL97-2



68" or 74" Width
 Standard Duty; Low Profile
 10 Gauge Shell
 Available with Standard Floor or Long Floor
 Optional Weld-on Teeth or Bolt-on Edge
 68" 7 Teeth
 74" 8 Teeth
 Struck Capacity:
 68" 10.24 cu/ft Std, 12.39 cu/ft Long
 74" 11.13 cu/ft Std, 13.5 cu/ft Long
 Heaped Capacity:
 68" 14.51 cu/ft Std, 18.01 cu/ft Long
 74" 15.84 cu/ft Std, 19.67 cu/ft Long

*Must order Buckets in multiples of 8,
 with multiples of 2 being identical
 Price break at 16 Buckets

Material Handling

YOU MUST ADD 11% SURCHARGE TO PRICES AS OF 8/4/21

MODEL NUMBER	DESCRIPTION	APPROX. MACHINE WEIGHT	SHIPPING WEIGHT	LIST PRICE
AP-SL68SLT-16	68" w/Low Profile, Standard Floor, 7 Teeth	485#	510#	\$ 1,697
AP-SL68SLC-16	68" w/Low Profile, Standard Floor, Bolt on Edge	538#	570#	\$ 1,553
AP-SL68SLLT-16	68" w/Low Profile, Long Floor, 7 Teeth	520#	555#	\$ 1,760
AP-SL68SLLC-16	68" w/Low Profile, Long Floor, Bolt on Edge	572#	605#	\$ 1,493
AP-SL74SLT-16	74" w/Low Profile, Standard Floor, 8 Teeth	516#	551#	\$ 1,768
AP-SL74SLC-16	74" w/Low Profile, Standard Floor, Bolt on Edge	571#	604#	\$ 1,654
AP-SL74SLLT-16	74" w/Low Profile, Long Floor, 8 Teeth	552#	610#	\$ 1,800
AP-SL74SLLC-16	74" w/Low Profile, Long Floor, Bolt on Edge	607#	645#	\$ 1,728
OPTIONS	DESCRIPTION			
-08	8-PACK PRICING (replace -16 option with -08 option and add \$40 List to each bucket)			\$ 40
	Replacement Parts (Ordered through Parts Department)			
812-497C	LH Sidecutter	9#		\$ 49
812-498C	RH Sidecutter	9#		\$ 49
820-593C	66" Bolt-on Cutting Edge	97#		\$ 206
820-554C	68" Bolt-on Cutting Edge	100#		\$ 216
820-552C	74" Bolt-on Cutting Edge	108#		\$ 270
820-555C	80" Bolt-on Cutting Edge	116#		\$ 324

AP-HD Series Heavy-Duty Buckets

RETURN TO INDEX

AVAILABLE FOR: SSV65 / SSV75 / SVL75-2 / SVL97-2



68", 74", or 80" Width
 Heavy Duty; Low Profile
 3/16" Shell
 Available with Standard Floor or Long Floor
 Optional Weld-on Teeth or Bolt-on Edge
 68" 7 Teeth
 74" 8 Teeth
 80" 9 Teeth
 Struck Capacity: 68" 10.24 cu/ft Std, 12.39 cu/ft Long
 74" 11.13 cu/ft Std, 13.5 cu/ft Long
 80" 12.01 cu/ft Std, 14.53 cu/ft Long
 80" High Capacity: 18.41 cu/ft,
 Heaped Capacity: 68" 14.51 cu/ft Std, 18.01 cu/ft Long
 74" 15.84 cu/ft Std, 19.67 cu/ft Long
 80" 16.86 cu/ft Std, 20.84 cu/ft Long
 80" High Capacity: 24.97 cu/ft Long

*Must order Buckets in multiples of 8,
 with multiples of 2 being identical
 Price break at 16 Buckets - Mix-n-Match

Material Handling

YOU MUST ADD 11% SURCHARGE TO PRICES AS OF 8/4/21

MODEL NUMBER	DESCRIPTION	APPROX. MACHINE WEIGHT	SHIPPING WEIGHT	LIST PRICE
AP-HD66LT-16	66" w/Low Profile, Standard Floor, 7 Teeth	535#	574#	\$ 1,686
AP-HD66LC-16	66" w/Low Profile, Standard Floor, Bolt on Edge	584#	623#	\$ 1,697
AP-HD66LLT-16	66" w/Low Profile, Long Floor, 7 Teeth	577#	616#	\$ 1,724
AP-HD66LLC-16	66" w/Low Profile, Long Floor, Bolt on Edge	627#	666#	\$ 1,789
AP-HD68LT-16	68" w/Low Profile, Standard Floor, 7 Teeth	545#	582#	\$ 1,704
AP-HD68LC-16	68" w/Low Profile, Standard Floor, Bolt on Edge	597#	680#	\$ 1,715
AP-HD68LLT-16	68" w/Low Profile, Long Floor, 7 Teeth	588#	600#	\$ 1,741
AP-HD68LLC-16	68" w/Low Profile, Long Floor, Bolt on Edge	640#	680#	\$ 1,807
AP-HD74LT-16	74" w/Low Profile, Standard Floor, 8 Teeth	581#	618#	\$ 1,709
AP-HD74LC-16	74" w/Low Profile, Standard Floor, Bolt on Edge	636#	673#	\$ 1,728
AP-HD74LLT-16	74" w/Low Profile, Long Floor, 8 Teeth	626#	663#	\$ 1,780
AP-HD74LLC-16	74" w/Low Profile, Long Floor, Bolt on Edge	680#	717#	\$ 1,870
AP-HD80LT-16	80" w/Low Profile, Standard Floor, 9 Teeth	667#	764#	\$ 2,003
AP-HD80LC-16	80" w/Low Profile, Standard Floor, Bolt on Edge	725#	762#	\$ 2,190
AP-HD80LLT-16	80" w/Low Profile, Long Floor, 9 Teeth	717#	844#	\$ 2,092
AP-HD80LLC-16	80" w/Low Profile, Long Floor, Bolt on Edge	774#	840#	\$ 2,234
AP-HD80HT-16	80" w/High Capacity, 9 Teeth	745#	840#	\$ 2,300
AP-HD80HC-16	80" w/High Capacity, Bolt on Edge	802#	837#	\$ 2,447
OPTIONS	DESCRIPTION			
-08	8-PACK PRICING (replace -16 option with -08 option and add \$40 List to each bucket)			\$ 40

AP-SRB15 Series Rock Buckets

RETURN TO INDEX

AVAILABLE FOR: SSV65 / SSV75 / SVL75-2 / SVL97-2

Material Handling



Height: 21¹/₂"
 Number of Teeth: 21, 23, 25
 Spacing of Teeth: 3"
 Tooth Thickness: 3/₈"
 Working Length of Teeth: 38"
 Tine Material: High Strength Grade 80 Material

YOU MUST ADD 11% SURCHARGE TO PRICES AS OF 8/4/21

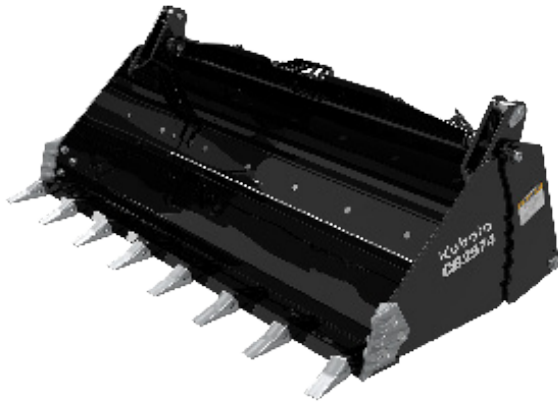
MODEL NUMBER	DESCRIPTION	APPROX. MACHINE WEIGHT	SHIPPING WEIGHT	LIST PRICE
AP-SRB1566	15 SERIES ROCK BUCKET - 66" Width	508#	523#	\$ 1,994
AP-SRB1572	15 SERIES ROCK BUCKET - 72" Width	550#	566#	\$ 2,148
AP-SRB1578	15 SERIES ROCK BUCKET - 78" Width	594#	612#	\$ 2,343

MUST BE ORDERED AS TWO PACKS, SAME SIZE

AP-CB25 Series Combination Buckets

RETURN TO INDEX

AVAILABLE FOR: SSV65 / SSV75 / SVL65-2 / SVL75-2 / SVL97-2



Standard 3/4" x 8" Dual Front Cutting Edge on Jaw
 Bolt-on Edge Back Blade
 Cylinder Protection
 Optional Counterbalance Valve - Prevents Hydraulic Bleed-off and Improves Cylinder Control
 33" Opening
 32" Depth
 Struck Capacity 10-16 cu.ft.
 (depending on size and options)
 Heaped Capacity 15-22 cu.ft.
 (depending on size and options)

Material Handling

YOU MUST ADD 11% SURCHARGE TO PRICES AS OF 8/4/21

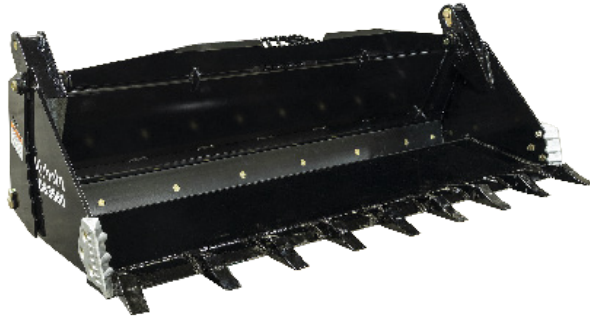
MODEL NUMBER	DESCRIPTION	APPROX. MACHINE WEIGHT	SHIPPING WEIGHT	LIST PRICE
AP-CB2568-01	25 SERIES COMBINATION BUCKET - 68" Width, with BOE	1,006#	1,081#	\$ 4,229
AP-CB2568-02	25 SERIES COMBINATION BUCKET - 68" Width, with Teeth	963#	1,038#	\$ 4,349
ADD OPTION NO. You May Choose This Option				
-20	68" Spill Guard (381-118A)	24#	24#	\$ 165
AP-CB2574-01	25 SERIES COMBINATION BUCKET - 74" Width, with BOE	1,054#	1,149#	\$ 5,034
AP-CB2574-02	25 SERIES COMBINATION BUCKET - 74" Width, with Teeth	1,018#	1,096#	\$ 5,166
ADD OPTION NO. You May Choose This Option				
-20	74" Spill Guard (381-117A)	26#	26#	\$ 171
AP-CB2580-01	25 SERIES COMBINATION BUCKET - 80" Width, with BOE	1,146#	1,220#	\$ 5,159
AP-CB2580-02	25 SERIES COMBINATION BUCKET - 80" Width, with Teeth	1,089#	1,165#	\$ 5,341
ADD OPTION NO. You May Choose This Option				
-20	80" Spill Guard (381-100A)	28#	28#	\$ 177
ADD OPTION NO. You MUST Choose a Valve Option				
-30	Counterbalance Valve (381-101A)	13#	13#	\$ 348
-31	Without Counterbalance Valve (381-142A)	1#	1#	\$ 17

NOTE: If attaching to a Kubota Skid Steer, route hydraulic hoses through Kubota's SVL or SSV Hose Stay. Purchase SVL Hose Stay #S6689 or SSV Hose Stay #77700-07225. Refer to the Operator's Manual for more instructions.

AP-CB35 Series Combination Buckets

RETURN TO INDEX

AVAILABLE FOR: SSV65 / SSV75 / SVL65-2 / SVL75-2 / SVL95-2s/SVL97-2



- Heavy-Duty Cast Hinges
- 74": 3/4" Cutting Edge
- 80"/84": 1" Cutting Edge
- BOEs Standard
- Cylinder Protection
- Cylinder: 2.5 x 8 x 1.5 Rod
- Standard Dual Pilot Operated Check Valve
- Optional Spill Guard
- Optional Side Cutters
- 33" Opening
- Struck Capacities (varies by option)
 - 74": 9.75 to 14.75 ft³
 - 80": 10.50 to 16 ft³
 - 84": 11 to 16.75 ft³
- Heaped Capacities (varies by option)
 - 74": 14.50 to 20.50 ft³
 - 80": 15.75 to 22.33 ft³
 - 84": 16.50 to 23.50 ft³

Material Handling

YOU MUST ADD 11% SURCHARGE TO PRICES AS OF 8/4/21

MODEL NUMBER	DESCRIPTION	APPROX. MACHINE WEIGHT	SHIPPING WEIGHT	LIST PRICE
AP-CB3574-01	35 SERIES COMBINATION BUCKET - 74" Width, with BOE	1,006#	1,081#	\$ 5,705
AP-CB3574-02	35 SERIES COMBINATION BUCKET - 74" Width, with Teeth	963#	1,038#	\$ 5,805
ADD OPTION NO. You May Choose This Option				
-10	Side cutters (381-102A)	20#	20#	\$ 77
-20	74" Spill Guard (381-272A)	24#	24#	\$ 130
AP-CB3580-01	35 SERIES COMBINATION BUCKET - 80" Width, with BOE	1,054#	1,129#	\$ 5,980
AP-CB3580-02	35 SERIES COMBINATION BUCKET - 80" Width, with Teeth	1,018#	1,093#	\$ 6,150
ADD OPTION NO. You May Choose This Option				
-10	Side Cutters (381-102A)	20#	20#	\$ 77
-20	80" Spill Guard (381-250A)	26#	26#	\$ 145
AP-CB3584-01	35 SERIES COMBINATION BUCKET - 84" Width, with BOE	1,146#	1,220#	\$ 6,160
AP-CB3584-02	35 SERIES COMBINATION BUCKET - 84" Width, with Teeth	1,089#	1,165#	\$ 6,380
ADD OPTION NO. You May Choose This Option				
-10	Side Cutters (381-102A)	20#	20#	\$ 77
-20	84" Spill Guard (381-273A)	28#	28#	\$ 160

NOTE: If attaching to a Kubota Skid Steer, route hydraulic hoses through Kubota's SVL or SSV Hose Stay. Purchase SVL Hose Stay #S6689 or SSV Hose Stay #77700-07225. Refer to the Operator's Manual for more instructions.

AP-GB30 Series Scrap Grapple Buckets

RETURN TO INDEX

AVAILABLE FOR: SSV65 / SSV75 / SVL75-2 / SVL97-2



Greasable Pivot Points
 1/4" Two-Piece Shell
 1/2" End Panels
 Five Bottom Wear Bars
 3/4" Grapple Tines
 2 1/2" x 8" x 1 1/4" Cylinders
 Steel Hydraulic Lines
 Jaw Opening: 40-5/8"
 Depth: 36"
 Hydraulic Shield Kit is now standard
 Options:
 Bolt on Cutting Edge: 3/4" x 69"
 Cylinder Rod Shield Kit

Material Handling

YOU MUST ADD 11% SURCHARGE TO PRICES AS OF 8/4/21

MODEL NUMBER	DESCRIPTION	APPROX. MACHINE WEIGHT	SHIPPING WEIGHT	LIST PRICE
AP-GB3068-21	30 SERIES SCRAP GRAPPLE BUCKET - 68" Width	1,091#	1,093#	\$ 4,250
AP-GB3074-21	30 SERIES SCRAP GRAPPLE BUCKET - 74" Width	1,138#	1,142#	\$ 4,668
AP-GB3080-21	30 SERIES SCRAP GRAPPLE BUCKET - 80" Width	1,215#	1,220#	\$ 5,079
ADD OPTION NO.				
-10	Bolt on Cutting Edge for 68"; 3/4" x 69" (381-120A)	104#	104#	\$ 272
-10	Bolt on Cutting Edge for 74"; 3/4" x 75" (381-119A)	113#	113#	\$ 294
-10	Bolt on Cutting Edge for 80"; 3/4" x 81" (381-103A)	122#	122#	\$ 324
-31	Cylinder Rod Shield Kit (380-278A)	37#	37#	\$ 194

temporarily suspended

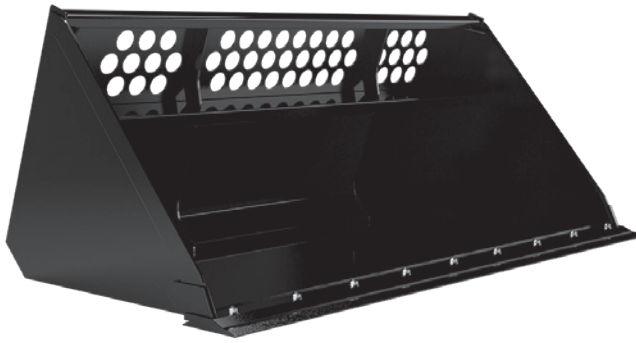
NOTE: If attaching to a Kubota Skid Steer, route hydraulic hoses through Kubota's SVL or SSV Hose Stay. Purchase SVL Hose Stay #S6689 or SSV Hose Stay #77700-07225. Refer to the Operator's Manual for more instructions.

AP-LM25 Series Light Material Bucket

RETURN TO INDEX

AVAILABLE FOR: SSV65 / SSV75 / SVL75-2 / SVL97-2

Material Handling



High Back Design
 Cut Out in Backplate for Visibility
 3/16" Shell
 1/4" End Panels
 6" x 3/4" Base Edge
 Bolt-on Cutting Edge Optional
 8" x 5/8" Reversible
 Heavy-duty Construction
 33" H x 40" D High Capacity Bucket
 Struck Capacity:
 84" - 30.9 cu.ft. (.87 cu.m.)
 96" - 35.4 cu.ft. (1.0 cu.m.)
 108" - 40.4 cu.ft. (1.14 cu.m.)

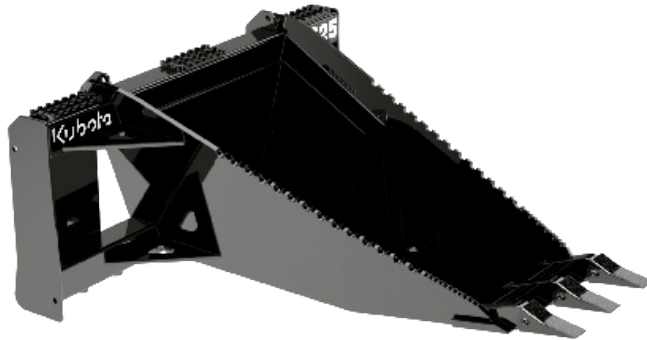
YOU MUST ADD 11% SURCHARGE TO PRICES AS OF 8/4/21

MODEL NUMBER	DESCRIPTION	APPROX. MACHINE WEIGHT	SHIPPING WEIGHT	LIST PRICE
AP-LM2584	25 SERIES LIGHT MATERIAL BUCKET - 84" Width	719#	738#	\$ 1,916
ADD OPTION NO.				
-01	84" Cutting Edge	109#	109#	\$ 237
AP-LM2596	25 SERIES LIGHT MATERIAL BUCKET - 96" Width	803#	824#	\$ 2,011
ADD OPTION NO.				
-01	96" Cutting Edge	125#	125#	\$ 267
AP-LM25108	25 SERIES LIGHT MATERIAL BUCKET - 108" Width	869#	890#	\$ 2,330
ADD OPTION NO.				
-01	108" Cutting Edge	140#	140#	\$ 296

AP-UB25 Utility Bucket

[RETURN TO INDEX](#)

AVAILABLE FOR: SSV65 / SSV75 / SVL75-2 / SVL97-2



Width: 45⁷/₈"
 Height: 22"
 Number of Teeth: 3
 Tooth Spacing: 5"
 Replaceable Pin-on Teeth
 Working Length: 53³/₈"
 Bucket Material: 1/2" 1021 Steel
 Bucket Width: 25¹/₂" at Hitch
 Weld-on Hardened Steel Cutting Edge
 Serrated Edges for Cutting

Material Handling

YOU MUST ADD 11% SURCHARGE TO PRICES AS OF 8/4/21

MODEL NUMBER	DESCRIPTION	APPROX. MACHINE WEIGHT	SHIPPING WEIGHT	LIST PRICE
AP-UB25	25 SERIES UTILITY BUCKET	476#	512#	\$ 1,342

AP-PFL46 & AP-PFL56 Series Pallet Forks

RETURN TO INDEX

46 Series: 4,500 lbs. Carrying Capacity
 56 Series: 5,500 lbs. Carrying Capacity @ 24"

AVAILABLE FOR: SSV65 / SSV75 / SVL75-2 / SVL97-2

Material Handling



46 SERIES:

Fork Dimensions: 48"L x 1½"D x 4"W
 Fork Position Lock: Spring Loaded Toggle
 Frame Size: 46"W x 38½"H
 Fork Size: 1½" x 4" ITA Class II
 Adjustable Fork Width: 8"-44"
 Skid Resistant Step

56 SERIES:

Fork Dimensions:
 PFL5648: 48"L x 1¾"D x 4"W
 PFL5660: 60"L x 1¾"D x 4"W
 Fork Position Lock: Spring Loaded Toggle
 Frame Size: 46"W x 37"H
 Fork Size: 1¾" x 4" ITA Class II
 Adjustable Fork Width: 8"-44"
 Skid Resistant Step

YOU MUST ADD 11% SURCHARGE TO PRICES AS OF 8/4/21

MODEL NUMBER	DESCRIPTION	APPROX. WEIGHT	SHIPPING WEIGHT	LIST PRICE
AP-PFL4648-93	46 SERIES PALLET FORKS - 48" Forks 4,500 lbs Carrying Capacity	416#	494#	\$ 1,243
	Packed in Qty of 3 same size Units			
	Quantity less than 3 Units, or those not included in multiple of 3. DELETE -93 and ADD OPTION -99		ADD	\$ 77
AP-PFL5648-93	56 SERIES PALLET FORKS - 48" Forks 5,500 lbs Carrying Capacity, Skid/Loader Plate	448#	524#	\$ 1,303
	Packed in Qty of 3 same size Units			
	Quantity less than 3 Units, or those not included in multiple of 3, DELETE -93 and ADD OPTION -99		ADD	\$ 77
AP-PFL5660-93	56 SERIES PALLET FORKS - 60" Forks 5,500 lbs Carrying Capacity, Skid/Loader Plate	495#	573#	\$ 1,666
	Packed in Qty of 3 same size Units			
	Quantity less than 3 Units, or those not included in multiple of 3, DELETE -93 and ADD OPTION -99		ADD	\$ 77

AP-LB60 Loader Boom

[RETURN TO INDEX](#)

AVAILABLE FOR: SSV65 / SSV75 / SVL75-2 / SVL97-2



6" x 6" Tube Construction
 6,000 lbs. Lift Capacity
 Flat Front
 Two 1" Lifting Lugs
 Stabilizer Chain Connections / Side Plates
 45" W x 68" H
 Reinforced Mast
 Black Only

Material Handling

YOU MUST ADD 11% SURCHARGE TO PRICES AS OF 8/4/21

MODEL NUMBER	DESCRIPTION	APPROX. MACHINE WEIGHT	SHIPPING WEIGHT	LIST PRICE
AP-LB60-92	60 SERIES LOADER BOOM 2-Pak	376#	490#	\$ 1,414
To Order Single Unit, Replace -92 with -99				\$ 104

AP-BR Series Hydraulic Breakers

RETURN TO INDEX



See Breaker Mount Selection Guide on Next Page

All Breakers come with a Moil point and Chisel point

AVAILABLE FOR: SSV65 / SSV75 / SVL75-2 / SVL97-2

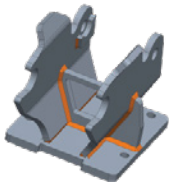
Tool Diameter (in.):	BR310 - 1.42 BR360 - 1.65 BR460 - 1.97	BR510 - 2.83 BR560 - 3.15 BR860 - 3.54
Impact Frequency* (bpm):	BR310 - 1,300-2,500 BR360 - 1,200-1,600 BR460 - 1,000-2,000	BR510 - 600-1,800 BR560 - 500-1,700 BR860 - 500-1,700
Oil Flow Range (gpm):	BR310 - 3.9 to 8.7 BR360 - 5.3 to 12.7 BR460 - 7.9 to 16.6	BR510 - 9.2 to 23.8 BR560 - 10.5 to 31.7 BR860 - 13.2 to 39.6
Overall Length (in.): w/tool	BR310 - 34.8 BR360 - 39.1 BR460 - 44.4	BR510 - 49.6 BR560 - 57.0 BR860 - 65.7

YOU MUST ADD 11% SURCHARGE TO PRICES AS OF 8/4/21

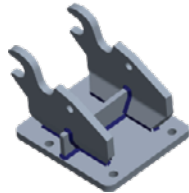
MODEL NUMBER	DESCRIPTION	APPROX. MACHINE WEIGHT	SHIPPING WEIGHT	LIST PRICE
AP-BR310	310 HYDRAULIC BREAKER	189#	222#	\$ 5,835
OPTION	You May Select a Mount or Hose Kit			
-01	Fits B26 Backhoe QA Mount (317-343A)	34#	34#	\$ 225
-02	Fits K008 Excavator Pin-On Mount (317-351A)	22#	22#	\$ 132
-21	BR310 Hose Kit	10#	10#	\$ 84
AP-BR360	360 HYDRAULIC BREAKER	256#	298#	\$ 7,311
OPTION	You May Select a Mount or Hose Kit			
-01	Fits U17/KX018 Excavator QA Mount (317-344A)	54#	54#	\$ 225
-06	SCL CII Mount (317-415A)	88#	88#	\$ 372
-07	SCL 2-Lever Mount (317-426A)	135#	135#	\$ 546
-21	BR360 Hose Kit (317-390A)	10#	10#	\$ 90
-26	SCL Hose Kit (317-418A)	10#	10#	\$ 270
AP-BR460	460 HYDRAULIC BREAKER	409#	449#	\$ 9,021
OPTION	You May Select a Mount or Hose Kit			
-01	Fits U25/U27 Excavator QA Mount, Small (317-345A)	71#	71#	\$ 225
-02	Fits U35/KX71/KX033/M62 Excavator QA Mount, Large (317-346A)	95#	95#	\$ 344
-06	SCL CII Mount (317-415A)	88#	88#	\$ 372
-07	SCL 2-Lever Mount (317-426A)	135#	135#	\$ 546
-21	61" Excavator Hose Kit (317-352A)	11#	11#	\$ 384
-26	SCL Hose Kit (317-421A)	11#	11#	\$ 330
AP-BR510	510 HYDRAULIC BREAKER MODEL 510	595#	628#	\$ 10,978
OPTION	You May Select a Mount or Hose Kit			
-01	Fits KX040 Excavator QA Mount (317-347A)	95#	95#	\$ 308
-02	Fits KX057/U55 Excavator QA Mount (317-348A)	111#	111#	\$ 373
-03	Skid Steer Plate with Bolt-On Breaker Mount (317-349A)	350#	350#	\$ 1,092
-05	SS Plate with QA Breaker Mount and KX040 QA Mount (317-392A)	340#	340#	\$ 1,017
-21	61" Excavator Hose Kit (317-352A)	11#	11#	\$ 384
-23	102" Skid Steer Hose (317- 353A)	15#	15#	\$ 344
AP-BR560	560 HYDRAULIC BREAKER	816#	849#	\$ 12,925
OPTION	You May Select a Mount or Hose Kit			
-02	Fits KX057/U55 Excavator QA Mount (317-348A)	111#	111#	\$ 373
-03	Skid Steer Plate with Bolt-On Breaker Mount (317-349A)	350#	350#	\$ 1,092
-04	KX080 Excavator QA Mount (317-406A)	188#	188#	\$ 460
-21	61" Excavator Hose Kit (317-352A)	11#	11#	\$ 384
-23	102" Skid Steer Hose (317-353A)	15#	15#	\$ 344
-24	95" Excavator Hose Kit - KX080 (317-354A)	5#	5#	\$ 427
AP-BR860	BR860 HYDRAULIC BREAKER	1,112#	1,145#	\$ 20,069
OPTION	You May Select a Mount or Hose Kit			
-01	Fits KX080 Excavator QA Mount (317-350A)	180#	180#	\$ 573
-21	BR860 Hose Kit	14#	14#	\$ 427

Demolition

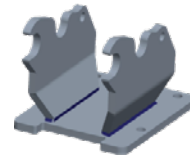
BREAKER MOUNT SELECTION GUIDE



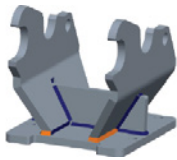
317-343A
(B26BH)



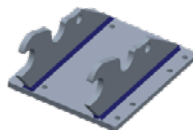
317-344A
(U17/KX018)



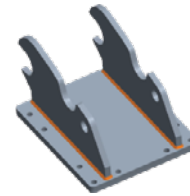
317-345A
(U25/U27)



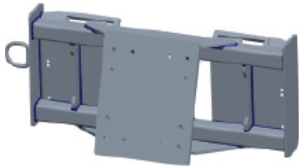
317-346A
(U35/KX71/KX033/M62BH)



317-347A
(KX040)



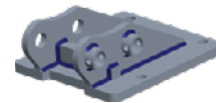
317-348A
(KX057/U55)



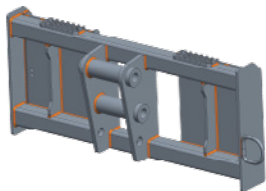
317-349A
(SS Bolt-On)



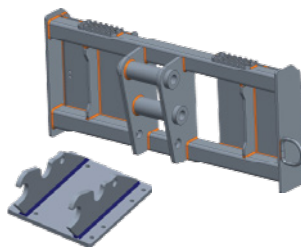
317-350A
(KX080/BR860)



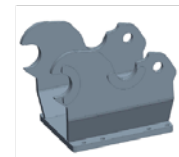
317-351A
(K008 Pin-On)



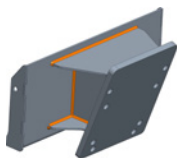
317-391A
(SS Quick Attach)



317-392A
(Consists of 317-347A + 317-391A)



317-406A
(KX080/BR560)



317-415A
(SCL1000 CII Hitch)

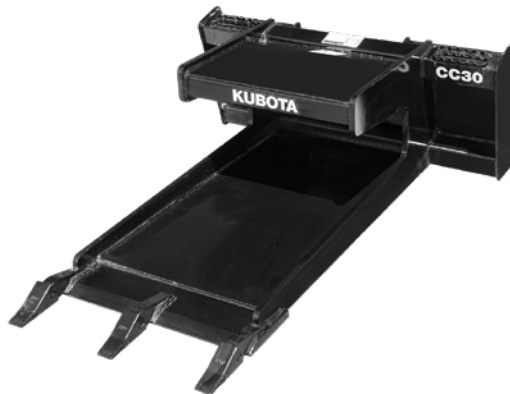


317-426A
(SCL1000 2-Lever Hitch)

AP-CC30 Concrete Claw

RETURN TO INDEX

AVAILABLE FOR: SSV65 / SSV75 / SVL75-2 / SVL97-2



Width: 45³/₄"
 Height: 21"
 Working Length: 63"
 Number of Teeth: 3
 Tooth Spacing: 12 ³/₄"
 Replaceable Pin-on Teeth
 Claw Material: 1/2" 1021 Steel Top & Bottom with 3/4"
 High-Strength End Plates
 Claw Width: 25¹/₂" at Hitch
 Weld-on Hardened Steel Cutting Edge

Demolition

YOU MUST ADD 11% SURCHARGE TO PRICES AS OF 8/4/21

MODEL NUMBER	DESCRIPTION	APPROX. MACHINE WEIGHT	SHIPPING WEIGHT	LIST PRICE
AP-CC30	30 SERIES CONCRETE CLAW	586#	668#	\$ 2,612

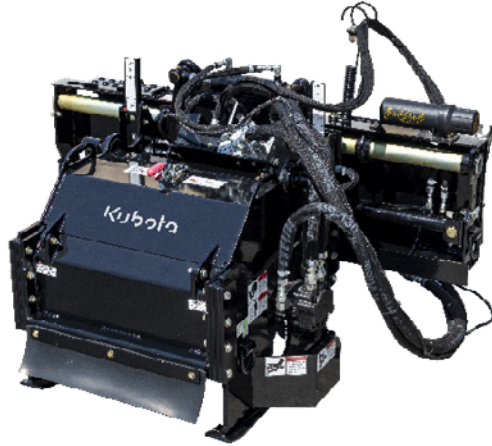
temporarily suspended

AP-CP30 Series Cold Planers

RETURN TO INDEX

15-30 gpm

AVAILABLE FOR: SSV65 / SSV75 / SVL75-2 / SVL97-2



Cutting Width: 12" to 48"
 Cutting Depth:
 LF Models - 0" - 5"
 Standard Models - 0" - 6"
 Tilt: 12", 16", 18" Models - +/-15 Degrees
 24" Models - +/-13 Degrees
 30" Models - +/-10 Degrees
 40" Models - +/-8 Degrees
 48" Models - +/-6 Degrees
 Side Shift: 26"
 Teeth: 12" - 30
 16" - 38
 18" - 40
 24" - 50
 30" - 60
 40" - 76
 48" - 90
 Minimum GPM/ PSI:
 12"/16" LF Models - min. 15 GPM- max. 25 GPM
 18" Models - min. 24 GPM - max. 42 GPM
 24" Models - min. 27 GPM - max. 42 GPM
 30" Models - min. 30 GPM - max. 42 GPM
 40" Models - min. 30 GPM - max. 42 GPM
 48" Models - min. 30 GPM - max. 42 GPM
 Wall Clearance: 3.97" (N/A on LF Models)

Demolition

YOU MUST ADD 11% SURCHARGE TO PRICES AS OF 8/4/21

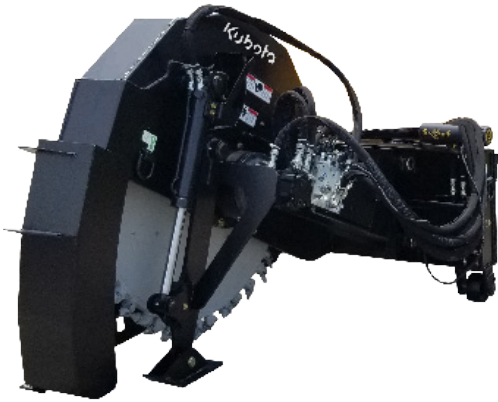
MODEL NUMBER	DESCRIPTION	APPROX. MACHINE WEIGHT	SHIPPING WEIGHT	LIST PRICE
AP-CP3012LF	30 SERIES COLD PLANER - 12" Low Flow	1,190#	1,285#	\$ 15,391
AP-CP3016LF	30 SERIES COLD PLANER - 16" Low Flow	1,360#	1,455#	\$ 15,964
AP-CP3018	30 SERIES COLD PLANER - 18"	1,635#	1,730#	\$ 25,526
AP-CP3024	30 SERIES COLD PLANER - 24"	1,805#	1,900#	\$ 28,230
AP-CP3030	30 SERIES COLD PLANER - 30"	1,895#	1,990#	\$ 32,015
AP-CP3040	30 SERIES COLD PLANER - 40"	2,215#	2,310#	\$ 36,991
AP-CP3048	30 SERIES COLD PLANER - 48"	2,410#	2,505#	\$ 43,372
ACCESSORIES				
350-378A	Water Tank Kit, CP30	135#	135#	\$ 2,898
350-379A	Spray Bar Kit, CP3012LF	3#	3#	\$ 265
350-380A	Spray Bar Kit, CP3016LF	4#	4#	\$ 281
350-381A	Spray Bar Kit, CP3018	5#	5#	\$ 319
350-382A	Spray Bar Kit, CP3024	6#	6#	\$ 341
350-383A	Spray Bar Kit, CP3030	7#	7#	\$ 379
350-384A	Spray Bar Kit, CP3040	8#	8#	\$ 427
350-385A	Spray Bar Kit, CP3048	9#	9#	\$ 470

AP-SW30 Series Road Saws

RETURN TO INDEX

Minimum 30 gpm @ 2,500 PSI

AVAILABLE FOR: SSV65 / SSV75 / SVL75-2 / SVL97-2



Cutting Width: 3010: 2.5", 4.5"
 3018: 3", 4.5", 6"
 Cutting Depth: 3010: 0" - 10"
 3018: 0" - 18"
 Hydraulic Side Shift: 0" - 26"
 Planetary Gear Drive
 Minimum GPM/PSI: 30 GPM/2,500 PSI

*Polycarbonate door recommended with this attachment.

Demolition

YOU MUST ADD 11% SURCHARGE TO PRICES AS OF 8/4/21

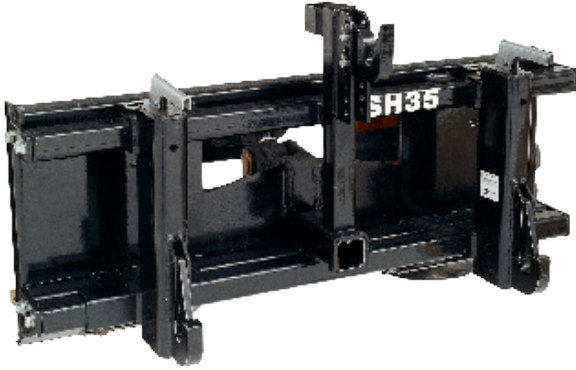
<u>MODEL NUMBER</u>	<u>DESCRIPTION</u>	<u>APPROX. MACHINE WEIGHT</u>	<u>SHIPPING WEIGHT</u>	<u>LIST PRICE</u>
AP-SW3010-2.5	30 SERIES ROAD SAW - 10" with 2.5" Wide Cut	1,323#	1,450#	\$ 21,897
AP-SW3010-4.5	30 SERIES ROAD SAW - 10" with 4.5" Wide Cut	1,361#	1,450#	\$ 22,638
AP-SW3018-3.0	30 SERIES ROAD SAW - 18" with 3" Wide Cut	2,344#	2,450#	\$ 32,259
AP-SW3018-4.5	30 SERIES ROAD SAW - 18" with 4.5" Wide Cut	2,398#	2,504#	\$ 32,935
AP-SW3018-6.0	30 SERIES ROAD SAW - 18" with 6" Wide Cut	2,453#	2,559#	\$ 33,476
-01	Operator Protective Door Assembly	40#	40#	\$ 420
	ACCESSORIES			
350-378A	Water Tank Kit	135#	135#	\$ 2,898
350-390A	Spray Bar Kit	5#	5#	\$ 330

AP-SH35 Series Skid Steer Hitch

RETURN TO INDEX

AVAILABLE FOR: SSV65 / SSV75 / SVL75-2 / SVL97-2

Hitches



Adjusts for Cat. 1 or 2 non-PTO implements
Adjustable Top Hook
Automatic Lock on Lower 3-Point
Class II Receiver and Storage Rack for Ball Hitch
Width: 46³/₈"
Height: 25"

YOU MUST ADD 11% SURCHARGE TO PRICES AS OF 8/4/21

MODEL NUMBER	DESCRIPTION	APPROX. MACHINE WEIGHT	SHIPPING WEIGHT	LIST PRICE
AP-SH35	SKID STEER 3-POINT HITCH	238#	290#	\$ 1,405

AP-TH35 Series Tilt-Hitch

RETURN TO INDEX

AVAILABLE FOR: SSV65 / SSV75 / SVL75-2 / SVL97-2

Hitches



20 Degree Tilt in Either Direction
 Angle Gauge and Level - Standard
 Nylon Slide Pads
 2.5 x 5 x 1.25 Welded Cylinder
 44" W x 20-1/2" H
 Universal Skid Hitch to Universal Skid Hitch

YOU MUST ADD 11% SURCHARGE TO PRICES AS OF 8/4/21

MODEL NUMBER	DESCRIPTION	APPROX. MACHINE WEIGHT	SHIPPING WEIGHT	LIST PRICE
AP-TH35	35 SERIES TILT HITCH	360#	396#	\$ 2,933
	<u>You May Choose</u>			
-01	Dual Pilot Operator Check Valve	3#	3#	\$ 274

NOTE: If attaching to a Kubota skid steer, route hydraulic hoses through Kubota's SVL or SSV Hose Stay. Purchase SVL Hose Stay #S6689 or SSV Hose Stay #77700-07225. Refer to the Operator's Manual for more instructions.

AP-KH15 Series K-Hitch

RETURN TO INDEX

Hitches



Tractor Hitch: Cat I, 3-Point
 Overall Width: 33-1/2"
 Height: 25"
 Length: 14-1/4"
 Driveline: Cat. 3
 Automatic Lock on Lower 3-Point Arms
 Hook or unhook with single lever
 Four point mounting system

Can be used with non-PTO implements

Available in Orange only

PATENTS PENDING

YOU MUST ADD 11% SURCHARGE TO PRICES AS OF 8/4/21

MODEL NUMBER	DESCRIPTION	APPROX. MACHINE WEIGHT	SHIPPING WEIGHT	LIST PRICE
AP-KH15	4-Point KUBOTA KITCH SYSTEM Cat. 1	154#	188#	\$ 2,295
	<u>MUST CHOOSE A TRACTOR DRIVELINE</u>			
-32	Cat 3 Driveline - B01, LX	35#	35#	\$ 0

AP-SBL25 Series Snow Blowers

RETURN TO INDEX

12-33 GPM

AVAILABLE FOR: SSV65 / SSV75 / SVL75-2 / SVL97-2

Snow Tools



Working Width : 66", 74", 84"
 Hitch: Skid/Loader Plate
 Main Housing Material: 10 Gauge
 Side Plate Material: 3/16"
 Impeller: 24" Diameter
 Impeller Housing Depth: 66 & 74: 8", 84: 10"
 Impeller Blades: 4
 Auger: 16" Diameter
 Auger Paddles: 4
 Chute Opening at Base: 66 & 74: 10", 84: 12"
 Chute Rotation: Sprocket Type; Hydraulic
 Chute Deflector Operation: Hydraulic
 3 Motors: 12-19 GPM; 20-26 GPM; 27-33 GPM
 30-60 Hydraulic HP
 Skid Shoes: Outer, Bolt-on, Adjustable & Replaceable
 * Case Drain Standard

SEE SNOW BLOWER FREIGHT CHART FOR LTL RATES

YOU MUST ADD 11% SURCHARGE TO PRICES AS OF 8/4/21

MODEL NUMBER	DESCRIPTION		APPROX. MACHINE WEIGHT	SHIPPING WEIGHT	LIST PRICE
AP-SBL2566	25 SERIES - 66" SNOW BLOWER		904#	940#	\$ 6,247
AP-SBL2574	25 SERIES - 74" SNOW BLOWER		939#	970#	\$ 6,723
AP-SBL2584	25 SERIES - 84" SNOW BLOWER		974#	1060#	\$ 7,358
ADD					
OPTION NO.	You MUST Choose a HYDRAULIC MOTOR				
-10	Hydraulic Motor 12-19 GPM	(370-528A)	38#	38#	\$ 1,375
-11	Hydraulic Motor 20-26 GPM	(370-529A)	20#	20#	\$ 1,396
-12	Hydraulic Motor 27-33 GPM	(370-530A)	48#	48#	\$ 1,384
You MUST Choose a COUPLER					
-20	Small, Flat-Faced Couplers	(316-290A)	3#	3#	\$ 145
-21	Large, Flat-Faced Couplers	(316-289A)	3#	3#	\$ 236
You MUST Choose a WIRE HARNESS					
-31	Skid Steer Control Harness	(370-134A)	5#	5#	\$ 308
-32	14 Pin Wiring Harness (Kubota SVL & Others)	(370-336A)	3#	3#	\$ 179
-35	2 Pin Wiring Harness (Kubota SVL w/o 14 Pin Connector)	(370-434A)	2#	2#	\$ 363
You May Choose a Couplers					
-40	CTL/SS Case Drain Coupler Package	(326-474A)	8#	8#	\$ 57
You MUST Choose a SKID SHOE					
-50	Outer Skid Shoes SBL2566	(370-451K)	34#	34#	\$ 153
-50	Outer Skid Shoes SBL2574 & SBL2584	(370-438K)	31#	31#	\$ 153
-51	Inner Skid Shoes	(370-440K)	50#	50#	\$ 216

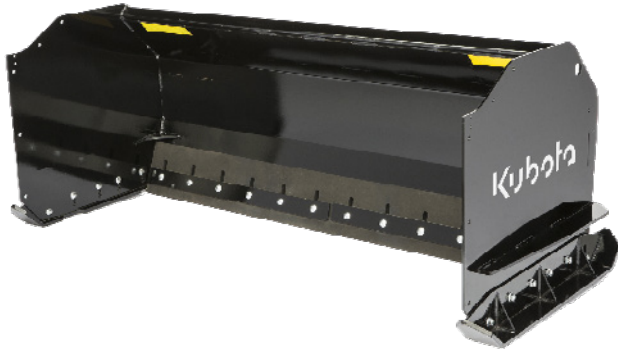
NOTE: If attaching to a Kubota Skid Steer, route hydraulic hoses through Kubota's SVL or SSV Hose Stay. Purchase SVL Hose Stay #S6689 or SSV Hose Stay #77700-07225. Refer to the Operator's Manual for more instructions.

AP-SSP15 Series Snow Pushers

RETURN TO INDEX

AVAILABLE FOR: SSV65 / SSV75 / SVL75-2 / SVL97-2

Snow Tools



Hitch: Quick-Attach
 Working Width: 84", 96"
 Carrier Lift Capacity: Less than 2,000 lbs
 Carrier Max. Operating Weight: Less than 5,000 lbs
 Moldboard Height: 30"
 Moldboard Thickness: 10 Gauge
 Side Panels w/Supports: 1/4" Plate
 Blade Depth: 29"
 Replaceable Bottom Wear Edge:
 1" x 8" Rubber w/Slotted Hole or
 1/2" x 6" 1045 Steel
 Mounting Steps: Serrated, on hitch
 Skid Shoe: AR400, 1/2" x 4" Reversible, Adjustable
 Optional Pull Back Blade with 1" x 8" Rubber Wear Edge



YOU MUST ADD 11% SURCHARGE TO PRICES AS OF 8/4/21

MODEL NUMBER	DESCRIPTION	APPROX. MACHINE WEIGHT	SHIPPING WEIGHT	LIST PRICE
AP-SSP1584	15 SERIES - 84" SNOW PUSHER	565#	603#	\$ 2,520
ADD OPTION NO.	<u>You MUST Choose a Wear Edge Option</u>			
-01	Rubber Wear Edge	62#	62#	\$ 430
-02	Steel Wear Edge	72#	72#	\$ 156
	<u>You MAY Choose a Back-Drag Option</u>			
-10	84" Pull Back Blade (303-379A)	221#	221#	\$ 1,002
AP-SSP1596	15 SERIES - 96" SNOW PUSHER	616#	667#	\$ 2,801
ADD OPTION NO.	<u>You MUST Choose a Wear Edge Option</u>			
-01	Rubber Wear Edge	65#	65#	\$ 492
-02	Steel Wear Edge	83#	83#	\$ 178
	<u>You MAY Choose a Back-Drag Option</u>			
-10	96" Pull Back Blade (303-378A)	308#	308#	\$ 1,093
ACCESSORIES				
323-026A	Markers (cannot be used in conjunction with pull back blade)	5#	5#	\$ 103

temporarily suspended

temporarily suspended

AP-SSP25 Series Snow Pusher

RETURN TO INDEX

AVAILABLE FOR: SSV65 / SSV75 / SVL75-2 / SVL97-2

Snow Tools



Hitch: Quick-Attach
 Working Width: 96"
 Carrier Lift Capacity: Less than 5,000 lbs
 Carrier Max. Operating Width: Less than 8,000 lbs
 Moldboard Height: 36"
 Moldboard Thickness: 3/16"
 Side Panels w/Supports: 5/16" Plate
 Blade Depth: 35"
 Replaceable Bottom Wear Edge:
 1 1/2" x 8" Rubber w/Slotted Hole or
 1/2" x 6" 1045 Steel
 Mounting Steps: Serrated, on hitch
 Skid Shoe: AR400, 1/2" x 4" Reversible, Adjustable
 Optional Pull Back Blade with 1 1/2" x 8" Rubber
 Wear Edge



YOU MUST ADD 11% SURCHARGE TO PRICES AS OF 8/4/21

MODEL NUMBER	DESCRIPTION	APPROX. MACHINE WEIGHT	SHIPPING WEIGHT	LIST PRICE
AP-SSP2596	25 SERIES - 96" SNOW PUSHER	845#	887#	\$ 3,100
ADD OPTION NO.				
	<u>You MUST choose a Wear Edge Option</u>			
-01	Rubber Wear Edge	77#	77#	\$ 597
-02	Steel Wear Edge	83#	83#	\$ 178
	<u>You MAY choose Options</u>			
-10	96" Pull Back Blade (303-386A)	300#	300#	\$ 1,150
-11	End Panel Braces (303-408A)	32#	32#	\$ 186
<u>ACCESSORIES</u>				
323-026A	Markers (cannot be used in conjunction with pull back blade)	6#	6#	\$ 103

AP-TE35 Series Trip Edge Blades

RETURN TO INDEX

AVAILABLE FOR: SSV65 / SSV75 / SVL75-2 / SVL97-2

Snow Tools



Moldboard Construction: Steel
 Moldboard Thickness: 7 Gauge
 Moldboard Height: 32"
 Hitch: Skid/Loader Plate
 22° Oscillation (L or R)
 Cut Width @ 30 Degree Maximum Angle: 96: 83"; 108: 93"
 Hydraulic Angling: Double-Acting Cylinder & Hoses
 Adjustable Spring-loaded Trip Edge Protection
 Blade Depth: Approx. 41"
 Mounting Steps: Serrated
 Skid Shoes
 Carrier Max. Hydraulic Output Pressure: 3500 psi max.
 Rated Max. Pressure Rating-Hoses & Fittings: 4,000 psi
 Replaceable Bottom Wear Edge: 1/2" x 6" Steel or Poly
 Optional Blade Marker
 Optional Top Mounted Rubber Deflector

YOU MUST ADD 11% SURCHARGE TO PRICES AS OF 8/4/21

MODEL NUMBER	DESCRIPTION	APPROX. MACHINE WEIGHT	SHIPPING WEIGHT	LIST PRICE
AP-TE3596	35 SERIES TRIP EDGE BLADE - 96" Blade	1114#	1202#	\$ 5,414
	YOU MUST CHOOSE ONE WEAR EDGE			
-01	Steel Wear Edge (301-603A)	138#		\$ 234
-02	Poly Wear Edge (301-605A)	51#		\$ 352
	YOU MAY PICK A DEFLECTOR OPTION			
-21	Top Rubber Deflector Shield (301-607A)	24#		\$ 87
AP-TE35108	35 SERIES TRIP EDGE BLADE - 108" Blade	1158#	1246#	\$ 5,548
	YOU MUST CHOOSE ONE WEAR EDGE			
-01	Steel Wear Edge (301-604A)	154#		\$ 263
-02	Poly Wear Edge (301-606A)	57#		\$ 423
	YOU MAY PICK A DEFLECTOR OPTION			
-21	Top Rubber Deflector Shield (301-608A)	27#		\$ 100
	OTHER OPTIONS			
-41	Blade Marker (323-026A)	2#		\$ 103

temporarily suspended

AP-AB72 & AP-AB84 Angle Brooms

RETURN TO INDEX

12-30 GPM

AVAILABLE FOR: SSV65 / SSV75 / SVL75-2 / SVL97-2

Attachments



- 1/2" Flat Faced Couplers Included
- Overall Height: 33" Approx.
- Brush Diameter: 32"
- Brush Rotor Shaft: Quick Change Broom Core with No Hydraulic Breakeage in Changeover
- Hex Drive System: Replaceable
- Brush Bristle: 100% Poly or 100% Metallic or 50/50
- Hood: Sheet Metal
- Jack Stands: Standard
- Angling: Manual Angling 30 Degrees Left or Right or Hydraulic Angling
- Integral Float Control:
 - Spring Loaded w/Adjustable Down Pressure & Stops
- Brush Speed Range: 100 - 230 RPM
- Hydraulic Hoses
- Hydraulic Couplers
- Additional Accessories:
 - Metal Shroud Extension
 - Dust Suppression System
- Marker Indicators
- Rubber Dust Deflector

Hydraulic GPM Range: 12-30 GPM
 Rated Flow Standard Motor: 25 GPM @ 230 RPM
 Minimum Hydraulic Flow Req.: 12 GPM @2000 PSI
 Hitch: Skid Steer
 Sweeping Width: 72", 84"
 Sweeping Width @ 30 Degree Max. Angle:
 72: 64", 84: 76"

HIGH FLOW: Allows higher GPM units to be used by diverting excess GPM (above 25 GPM) back to the tank.

YOU MUST ADD 11% SURCHARGE TO PRICES AS OF 8/4/21

MODEL NUMBER	DESCRIPTION	APPROX. MACHINE WEIGHT	SHIPPING WEIGHT	LIST PRICE
AP-AB72	ANGLE BROOM - 72" Sweeping Width	640#	1022#	\$ 2,611
AP-AB84	ANGLE BROOM - 84" Sweeping Width	679#	1096#	\$ 3,140
<u>YOU MUST CHOOSE ONE ANGLING FEATURE</u>				
FOR 12 - 24 GPM				
-01	Standard Flow w/Hydraulic Angling	15#	15#	\$ 1,410
-02	Standard Flow w/Manual Angling	10#	10#	\$ 525
FOR 25 GPM AND ABOVE ONLY				
-03	High Flow w/Hydraulic Angling - Must use Option -24	15#	15#	\$ 1,735
-04	High Flow w/Manual Angling - Must use Option -24	10#	10#	\$ 849
<u>YOU MUST CHOOSE ONE BROOM ASSEMBLY</u>				
-14	Poly Bristles (AB72/AB84)	220/225#		\$ 1,484
-15	Wire Bristles (AB72/AB84)	220/225#		\$ 1,484
-16	Poly/Wire Bristles (AB72/AB84)	220/225#		\$ 1,484
<u>YOU MUST CHOOSE ONE HYDRAULIC DRIVE MOTOR</u>				
-23	18 cu. in Hydraulic Motor - 18 GPM and below - 3500 psi	included		\$ 1,153
-24	23 cu. in. Hydraulic Motor - 19 GPM and above - 3500 psi	included		\$ 1,153
<u>YOU MAY CHOOSE ONE OF THE FOLLOWING FRONT DEFLECTORS</u>				
-31	Metal Shroud Extension w/Rubber Dust Deflector (323-021A)	59#		\$ 250
-32	Metal Shroud Extension Only (323-037A)	37#		\$ 141
<u>YOU MAY CHOOSE ONE OF THE FOLLOWING OPTIONS</u>				
-41	Marker Indicators (323-026A)	2#	2#	\$ 53
-51	Dust Suppression System w/25 Gallon Tank (323-030A)	37#	37#	\$ 535
-52	Hose and Spray Kit (323-043A)	20#	20#	\$ 129
<u>YOU MAY CHOOSE ONE OF THE FOLLOWING WIRING HARNESES</u>				
-60	14 Pin Wiring Harness, DEUTSCH HD30, 73" (323-094A) (For Kubota SVL/SSV only)	2#	2#	\$ 162
-61	14 Pin Wiring Harness, DEUTSCH HD30, 10' (323-095A) (For Kubota Tractors only)	2#	2#	\$ 162
-62	2 Pin Wiring Harness, DTP (2 Pin Kubota SVL) (323-096A)	2#	2#	\$ 222
-63	Switch and Wiring Harness (323-097A)	2#	2#	\$ 162
-64	Switch and Wiring Harness, Tractor Mount (323-098A)	2#	2#	\$ 234

AP-HB Series Hopper Brooms

RETURN TO INDEX

12-25 GPM

AVAILABLE FOR: SSV65 / SSV75 / SVL75-2 / SVL97-2

Attachments



- 1/2" Flat Faced Couplers Included
- Overall Height: 33" Approx.
- Brush Diameter: 26"
- Brush Rotor Shaft: Quick Change Broom Core with No Hydraulic Breakage in Changeover
- Hex Drive System: Replaceable
- Brush Bristle: 100% Poly or 100% Metallic or 50/50
- Hood: Sheet Metal
- Brush Speed Range: 100 - 230 RPM
- Hydraulic Hoses
- Hydraulic Couplers
- Optional Dust Suppression System

Hydraulic GPM Range: 12-25 GPM
 Rated Flow Standard Motor: 25 GPM @ 230 RPM
 Minimum Hydraulic Flow Req.: 12 GPM @2000 PSI
 Hitch: Skid Steer
 Sweeping Width: 74", 84"
 Bucket Shell: 3/16"
 Bolt-on Cutting Edge Standard: 5/8"x8"

YOU MUST ADD 11% SURCHARGE TO PRICES AS OF 8/4/21

<u>MODEL NUMBER</u>	<u>DESCRIPTION</u>	<u>APPROX. MACHINE WEIGHT</u>	<u>SHIPPING WEIGHT</u>	<u>LIST PRICE</u>
AP-HB74	HOPPER BROOM - 74" Sweeping Width	1043#	1153#	\$ 5,386
	<u>YOU MUST CHOOSE A BROOM ASSEMBLY</u>			
-14	Poly Bristles	222#		\$ 994
-15	Wire Bristles	222#		\$ 1,029
-16	Poly/Wire Bristles	222#		\$ 1,011
	<u>YOU MAY CHOOSE A GUTTER BROOM ASSEMBLY</u>			
-19	Gutter Broom (323-138A)	101#		\$ 1,517
	<u>YOU MAY CHOOSE A DUST SUPPRESSION FEATURE</u>			
-51	HB74 Dust Suppression Kit (323-158A)	194#		\$ 864
-52	HB74 Dust Suppression Kit w/Gutter Broom Dust Supression (323-160A)	197#		\$ 914
AP-HB84	84" HOPPER BROOM	1121#	1474#	\$ 5,652
	<u>YOU MUST CHOOSE A BROOM ASSEMBLY</u>			
-14	Poly Bristles	251#		\$ 1,283
-15	Wire Bristles	251#		\$ 1,329
-16	Poly/Wire Bristles	251#		\$ 1,307
	<u>YOU MAY CHOOSE A GUTTER BROOM ASSEMBLY</u>			
-19	Gutter Broom (323-138A)	101#		\$ 1,517
	<u>YOU MAY CHOOSE A DUST SUPPRESSION FEATURE</u>			
-51	HB84 Dust Suppression Kit (323-159A)	206#		\$ 932
-52	HB84 Dust Suppression Kit w/Gutter Broom Dust Supression (323-164A)	210#		\$ 982

AP-SD96 Silage Defacer

RETURN TO INDEX

AVAILABLE FOR: SSV65 / SSV75 / SVL75-2 / SVL97-2



Overall Width: 99-1/4"
 Working Width: 90-5/8"
 Rotor Diameter with Tines: 17"
 Tine Length: 6-1/2"
 Spiral Tine Pattern
 Optional Quick Attach Skid Plate or Euro Hitch
 Motor: 6.2 cu/in
 RPM: @ 12 gpm - 160
 @ 25 gpm - 335

Attachments

YOU MUST ADD 11% SURCHARGE TO PRICES AS OF 8/4/21

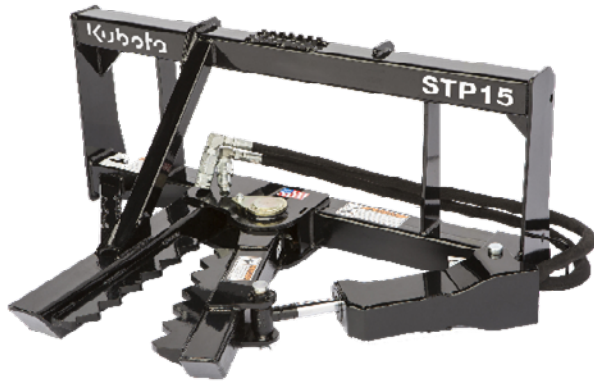
MODEL NUMBER	DESCRIPTION	APPROX. MACHINE WEIGHT	SHIPPING WEIGHT	LIST PRICE
AP-SD96	SILAGE DEFACER - 96" Width	800#	842#	\$ 5,119
<u>You MUST Choose a Hitch Option</u>				
-10	Euro Hitch	307#		\$ 1,064
-11	Quick Attach Hitch	295#		\$ 959
<u>You MUST Choose a Hose Option</u>				
-20	Tractor Loader Hoses	5#		\$ 336
-21	Skid Loader Hoses	4#		\$ 295

AP-STP15 Series Tree/Post Puller

RETURN TO INDEX

AVAILABLE FOR: SSV65

Attachments



Hitch: Skid Steer
 Cylinder: 2" x 8" x 1" Welded
 Stout Square Tube Frame
 Pincher: 16" x 2¾" x 5/8"
 Pivot Pin: 2½" Solid, Greasable
 Mouth Opening: 10"
 Cylinder Guard: 3/16", Included
 Small Flat Faced Couplers Included

YOU MUST ADD 11% SURCHARGE TO PRICES AS OF 8/4/21

temporarily suspended

MODEL NUMBER	DESCRIPTION	APPROX. MACHINE WEIGHT	SHIPPING WEIGHT	LIST PRICE
AP-STP15	15 SERIES TREE/POST PULLER	195#	245#	\$ 1,758

NOTE: If attaching to a Kubota Skid Steer, route hydraulic hoses through Kubota's SVL or SSV Hose Stay. Purchase SVL Hose Stay #S6689 or SSV Hose Stay #77700-07225. Refer to the Operator's Manual for more instructions.

AP-STP25 Series Tree/Post Puller

AVAILABLE FOR: SSV65 / SSV75 / SVL65-2 / SVL75-2 / SVL95-2s



Hitch: Skid Steer
 Cylinder: 2" x 8" x 1" Welded
 Stout Square Tube Frame
 Pincher: 16" x 2¾" x 5/8"
 Pivot Pin: 1¼" x 17" Solid, Greasable
 Mouth Opening: 10"
 Cylinder Guard: 3/16", Included
 Small Flat Faced Couplers Included

YOU MUST ADD 11% SURCHARGE TO PRICES AS OF 8/4/21

MODEL NUMBER	DESCRIPTION	APPROX. MACHINE WEIGHT	SHIPPING WEIGHT	LIST PRICE
AP-STP25	25 SERIES TREE/POST PULLER	495#	516#	\$ 2,200

ADD OPTION NO.

-10	Push Bar Assembly	101#	101#	\$ 412
-----	-------------------	------	------	--------

NOTE: If attaching to a Kubota Skid Steer, route hydraulic hoses through Kubota's SVL or SSV Hose Stay. Purchase SVL Hose Stay #S6689 or SSV Hose Stay #77700-07225. Refer to the Operator's Manual for more instructions.

AP- CPF12 Series Compact Pallet Forks

[RETURN TO INDEX](#)

1,200 lbs. Carrying Capacity

AVAILABLE FOR: SCL1000



Fork Dimensions: 36"L x 1.375"D x 3"W
 42"L x 1.375"D x 3"W
 Fork Position Lock: Spring Loaded Toggle
 Adjustable Width
 Spill Guard

Compact Attachments

YOU MUST ADD 11% SURCHARGE TO PRICES AS OF 8/4/21

MODEL NUMBER	DESCRIPTION	APPROX. WEIGHT	SHIPPING WEIGHT	LIST PRICE
AP-CPF1236-01	12 SERIES CII PALLET FORKS - 36" 1,200 lbs Carrying Capacity	224#	243#	\$ 816
AP-CPF1242-01	12 SERIES CII PALLET FORKS - 42" 1,200 lbs Carrying Capacity	234#	252#	\$ 843
<u>CHOOSE A QTY OPTION</u>				
-93	3-Pack			N/A
-99	Single			\$ 54

AP-CL148 & 248 Series Compact Loader High-Capacity Buckets

RETURN TO INDEX

AVAILABLE FOR: SCL1000



CII or 2-Lever Hitch
 Dimension without teeth:
 48" w x 21" h x 30" d
 3/16" Shell and End Panels
 Available with Bolt-on Edge (HC Model)
 Available with Bolt-on Teeth (HT Model)
 6 Teeth per bucket
 Struck Capacity: 7 cu.ft.
 Heaped Capacity: 9 cu.ft.

Compact Attachments

YOU MUST ADD 11% SURCHARGE TO PRICES AS OF 8/4/21

MODEL NUMBER	DESCRIPTION	APPROX. MACHINE WEIGHT	SHIPPING WEIGHT	LIST PRICE
AP-CL148H	48", CII Hitch, High Capacity	270#	340#	\$ 1,019
AP-CL148HC	48", CII Hitch, High Capacity, Bolt-on Edge	294#	363#	\$ 1,090
AP-CL148HT	48", CII Hitch, High Capacity, 6 Bolt-on Teeth	282#	357#	\$ 1,222

AP-CSA10 Series Planetary Compact Augers

RETURN TO INDEX

10-20 gpm

AVAILABLE FOR: SCL1000



CII Hitch
 Hydraulically Driven Planetary Gearbox
 Hydraulically Reversible
 Output Shaft: 2" Hex
 Auger Pipe: 2 1/2" ID
 Auger Flighting Thickness: 1/4"
 Auger Length: 48"
 Auger Diameter: 6"-24"
 2" Puff Auger
 Torque (at 100% Efficiency)
 1775 ft/lb @ 3000 PSI

Compact Attachments

YOU MUST ADD 11% SURCHARGE TO PRICES AS OF 8/4/21

MODEL NUMBER	DESCRIPTION	APPROX. MACHINE WEIGHT	SHIPPING WEIGHT	LIST PRICE
AP-CSA10-01	10 SERIES HYDRAULIC COMPACT AUGER CII Hitch	353#	393#	\$ 2,714
ADD OPTION NUMBER				
FOR 2" HEX OUTPUT SHAFTS				
-06	6" Double Flight Auger (317-273A)	60#	60#	\$ 503
-09	9" Double Flight Auger (317-095A)	70#	70#	\$ 526
-12	12" Double Flight Auger (317-098A)	98#	98#	\$ 598
-15	15" Double Flight Auger (317-101A)	119#	119#	\$ 765
-18	18" Double Flight Auger (317-104A)	131#	131#	\$ 842
-24	24" Double Flight Auger (317-107A)	214#	214#	\$ 986
-26	24" Tree Auger (317-110A)	162#	162#	\$ 899
-70	6" Rock Auger (317-280A)	40#	40#	\$ 1,060
-71	9" Rock Auger (317-263A)	89#	89#	\$ 1,322
-72	12" Rock Auger (317-264A)	111#	111#	\$ 1,631
-86	2" Puff Auger (317-318A)	32#	32#	\$ 504

See Accessories on pg. 59

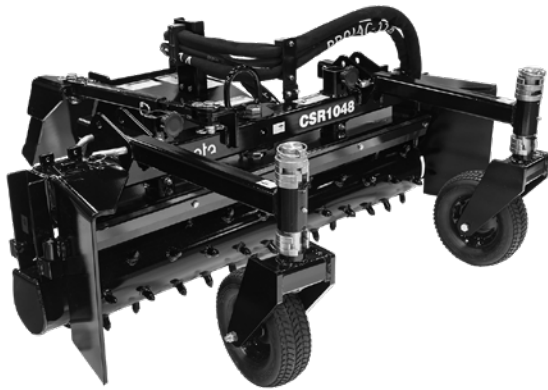
AP-CSR10 Series Compact Powered Rakes

RETURN TO INDEX

Up to 15 gpm

AVAILABLE FOR: SCL1000

Compact Attachments



- CII Hitch
- Direct Drive
- Manual or Hydraulic Angle
- Angle Adjustment: 25 Degrees Left & 25 Degrees Right, Forward or Reverse Roller Rotation
- Spacer Height Adjustment
- Bearing Protector
- Foam-Filled Gauge Wheels

YOU MUST ADD 11% SURCHARGE TO PRICES AS OF 8/4/21

MODEL NUMBER	DESCRIPTION	APPROX. MACHINE WEIGHT	SHIPPING WEIGHT	LIST PRICE
AP-CSR1048-01	10 SERIES COMPACT POWERED RAKE 48" Width; CII Hitch Carbide Tipped Studded Roller	424#	498#	\$ 7,117
<u>YOU MUST CHOOSE AN ANGLE OPTION</u>				
-11	Hydraulic Angle	72#		\$ 2,234
-12	Manual Angle	30#		\$ 449
<u>YOU MAY CHOOSE A WIRING HARNESS</u>				
-63	Battery Connect with Switch	12#	12#	\$ 162

Compact Loader Mount for BR Breakers

RETURN TO INDEX



All Breakers come with a Moil point and Chisel point

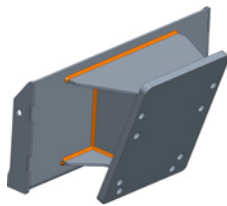
AVAILABLE FOR: SCL1000		
Tool Diameter (in.):	BR360 – 1.65	BR460 – 1.97
Impact Frequency* (bpm):	BR360 – 1,200-1,600	BR460 – 1,000-2,000
Oil Flow Range (gpm):	BR360 – 5.3 to 12.7	BR460 – 7.9 to 16.6
Overall Length (in.):	BR360 – 39.1	BR460 – 44.4

YOU MUST ADD 11% SURCHARGE TO PRICES AS OF 8/4/21

MODEL NUMBER	DESCRIPTION	APPROX. MACHINE WEIGHT	SHIPPING WEIGHT	LIST PRICE
AP-BR360	360 HYDRAULIC BREAKER	256#	298#	\$ 7,311
OPTION	You May Select a Mount or Hose Kit			
-06	SCL CII Mount (317-415A)	88#	88#	\$ 372
-21	BR360 Hose Kit (317-390A)	10#	10#	\$ 90
-26	SCL Hose Kit (317-418A)	10#	10#	\$ 270
AP-BR460	460 HYDRAULIC BREAKER	409#	449#	\$ 9,021
OPTION	You May Select a Mount or Hose Kit			
-06	SCL CII Mount (317-415A)	88#	88#	\$ 372
-26	SCL Hose Kit (317-421A)	11#	11#	\$ 330

Compact Attachments

BREAKER MOUNT SELECTION GUIDE



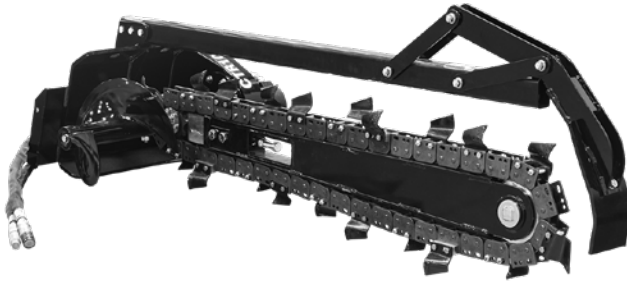
317-415A
(SCL1000 CII Mount)

AP-CTR10 Series Compact Trencher

RETURN TO INDEX

AVAILABLE FOR: SCL1000

Compact Attachments



CII Hitch
 30", 36", 48" Depths
 High Speed or High Torque Motor Options
 4", 6", 8", 10" Chain Width Options (30" & 36" models)
 4" & 6" Chain Width Options (48" Models)
 2-Pitch, 4-Pitch, and Combo Chain Options
 Standard Spoil Auger, 12.25" Diameter
 Positive Manual Chain Tensioner
 Optional Crumber Shoe to Clear Trench

YOU MUST ADD 11% SURCHARGE TO PRICES AS OF 8/4/21

MODEL NUMBER	DESCRIPTION	APPROX. MACHINE WEIGHT	SHIPPING WEIGHT	LIST PRICE
AP-CTR1030-01-10	30" TRENCHER - High Torque Motor, CII Hitch	395#	465#	\$ 4,568
AP-CTR1030-01-11	30" TRENCHER - High Speed Motor, CII Hitch	395#	465#	\$ 4,487
AP-CTR1036-01-10	36" TRENCHER - High Torque Motor, CII Hitch	415#	486#	\$ 4,741
AP-CTR1036-01-11	36" TRENCHER - High Speed Motor, CII Hitch	415#	486#	\$ 4,660
AP-CTR1048-01-10	48" TRENCHER - High Torque Motor, CII Hitch	425#	511#	\$ 5,212
AP-CTR1048-01-11	48" TRENCHER - High Speed Motor, CII Hitch	425#	511#	\$ 5,131

Trencher Options and Chain Selection Guide on following pages.

YOU MUST ADD 11% SURCHARGE TO PRICES AS OF 8/4/21

ADD OPTION NUMBER		APPROX. MACHINE WEIGHT	SHIPPING WEIGHT	LIST PRICE
<u>You MUST Choose a Chain (30" Only)</u>				
-30	2 Pitch Chain, Standard Cup, 4" (350-430A)	70	\$	654
-31	2 Pitch Chain, Standard Cup, 6" (350-431A)	75	\$	735
-32	2 Pitch Chain, Standard Cup, 8" (350-432A)	82	\$	963
-33	2 Pitch Chain, Standard Cup, 10" (350-433A)	94	\$	1,114
-34	4 Pitch Chain, Standard Cup, 4" (350-434A)	56	\$	497
-35	4 Pitch Chain, Standard Cup, 6" (350-435A)	59	\$	541
-36	4 Pitch Chain, Standard Cup, 8" (350-436A)	62	\$	627
-37	4 Pitch Chain, Standard Cup, 10" (350-437A)	65	\$	762
-38	Scorpion and Cup Chain, 4" (350-446A)	74	\$	1,033
-39	Scorpion and Cup Chain, 6" (350-447A)	83	\$	1,103
-40	Scorpion and Cup Chain, 8" (350-448A)	93	\$	1,298
-41	Scorpion and Cup Chain, 10" (350-449A)	104	\$	1,509
<u>You MUST Choose a Chain (36" Only)</u>				
-30	2 Pitch Chain, Standard Cup, 4" (350-422A)	86	\$	876
-31	2 Pitch Chain, Standard Cup, 6" (350-423A)	92	\$	979
-32	2 Pitch Chain, Standard Cup, 8" (350-424A)	102	\$	1,065
-33	2 Pitch Chain, Standard Cup, 10" (350-425A)	118	\$	1,233
-34	4 Pitch Chain, Standard Cup, 4" (350-426A)	69	\$	671
-35	4 Pitch Chain, Standard Cup, 6" (350-427A)	73	\$	686
-36	4 Pitch Chain, Standard Cup, 8" (350-428A)	77	\$	757
-37	4 Pitch Chain, Standard Cup, 10" (350-429A)	85	\$	833
-38	Scorpion and Cup Chain, 4" (350-442A)	91	\$	1,308
-39	Scorpion and Cup Chain, 6" (350-443A)	104	\$	1,406
-40	Scorpion and Cup Chain, 8" (350-444A)	112	\$	1,731
-41	Scorpion and Cup Chain, 10" (350-445A)	129	\$	2,018
<u>You MUST Choose Chain (48" Only)</u>				
-30	2 Pitch Chain, Standard Cup 4" (350-398A)	107	\$	1,103
-31	2 Pitch Chain, Standard Cup 6" (350-419A)	114	\$	1,190
-34	4 Pitch Chain, Standard Cup, 4" (350-420A)	87	\$	838
-35	4 Pitch Chain, Standard Cup, 6" (350-421A)	90	\$	898
-38	Scorpion and Cup Chain, 4" (350-440A)	114	\$	1,644
-39	Scorpion and Cup Chain, 6" (350-441A)	131	\$	1,839
<u>You MAY Choose a Crumber Shoe Assembly</u>				
-70	4" Crumber Shoe Assembly	24	\$	125
-71	6" Crumber Shoe Assembly	27	\$	130
-72	8" Crumber Shoe Assembly	29	\$	135
-73	10" Crumber Shoe Assembly	32	\$	140

	IMPLEMENTS*		
	LP TRUCK	LTL	SNOW-BLOWER LTL
Alabama	24	30	38
Arizona	30	36	45
Arkansas	33	35	44
California	36	38	47
Colorado - East of I-25	25	31	39
Colorado - West of I-25	29	39	49
Connecticut	37	44	55
Delaware	35	48	61
Florida Panhandle	32	36	45
Florida	37	41	52
Georgia	33	35	44
Idaho	35	37	46
Illinois	25	28	35
Indiana	28	31	39
Iowa	25	26	33
Kansas	22	23	29
Kentucky	25	28	35
Louisiana	28	41	52
Maine	37	54	68
Maryland	33	40	51
Massachusetts	37	44	55
Michigan	28	31	39
Minnesota	28	30	38
Mississippi	26	30	38
Missouri	25	26	33
Montana	35	43	53
Nebraska	26	28	35
Nevada	32	36	45
New Hampshire	37	41	52
New Jersey	35	41	52
New Mexico	31	35	44
New York	35	46	58
North Carolina	35	39	49
North Dakota	35	40	51
Ohio	29	32	40
Oklahoma	25	26	33
Oregon	35	44	55
Pennsylvania	35	39	49
Rhode Island	37	58	72
South Carolina	29	36	45
South Dakota	28	31	39
Tennessee	28	37	46
Texas	28	30	38
Utah	35	37	46
Vermont	37	53	67
Virginia	29	40	51
W. Virginia	30	39	49
Washington	37	45	56
Wisconsin	28	33	41
Wyoming	33	45	56

*All Rates per 100 lbs. (CWT)



P.O. Box 5060 • Salina, KS 67402-5060 • (888) 987-7433 • www.landpride.com